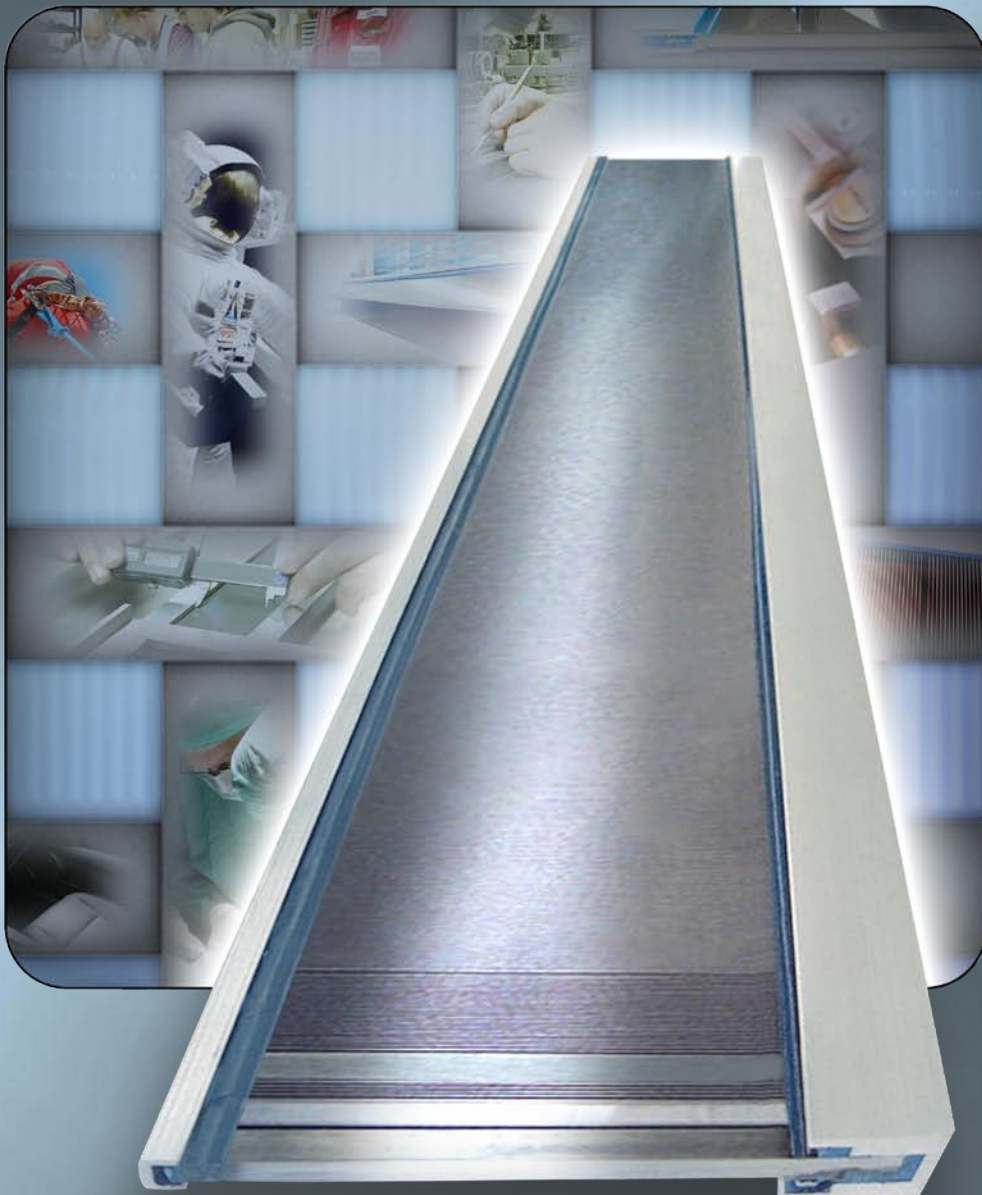


Innovation • Technology • Quality • Experience

Advanced weaving Products

- **Standard reeds**
for every weft insertion
- **Airjet reeds**
up to 450 dents per 100 mm
- **Special reeds**
for glas, silk, kevlar fabrics etc.
- **Reeds for forming fabric and wire fabric**
- **Super fine reeds**
for filtration, silk-screen printing, medical applications etc.

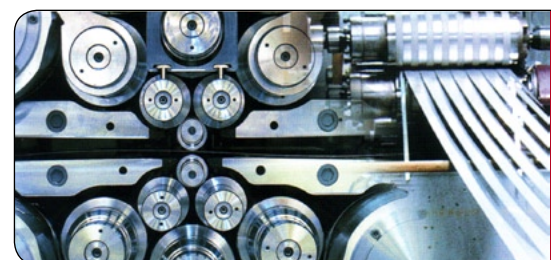
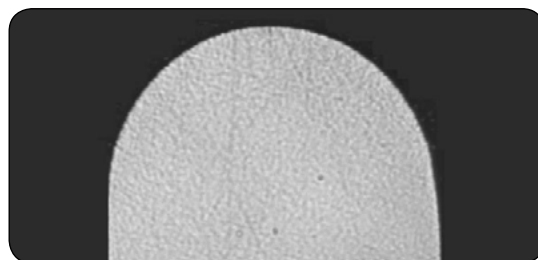


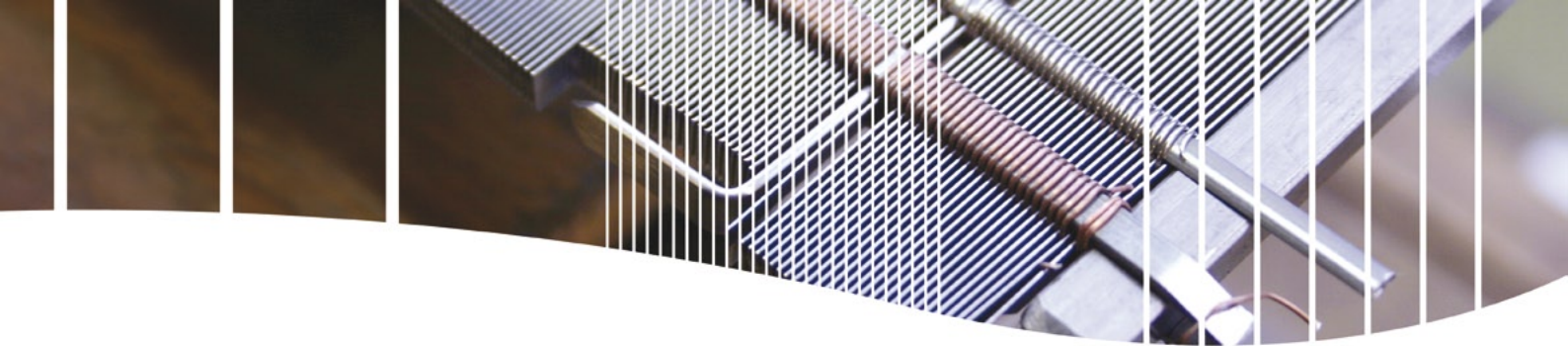
- **Lease reeds/ reeds for advanced weaving processes, extension combs**
- **Waterjet reeds**
- **Reeds for belt/narrow fabric**
- **Reeds with tin or brass application**
- **Heddles and droppers**
- **Wide range of weaving machine accessories**

Information for our PMC/Dryer customers

- Surface finish: Our Surface appearance is defined in terms of brightness and color. Surface roughness is measured with a special trailing-stylus instrument. The terminology and measuring methods can be found in EN ISO 4287 and EN ISO 4288.
- Surface roughness: Class limit R_a , μm ($\mu\text{in.}$): 0.05-0.125 (2-5)
Class mean R_a , μm ($\mu\text{in.}$): 0.08 (3)
- Surface appearance: White, free from oxide discoloration and with uniform color
- Highest degree of:
 - Bending and impact fatigue strength
 - Flatness
 - Surface quality
 - Wear resistance
 - Purity
 - Blanking properties

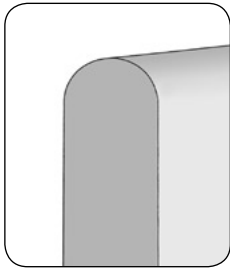
- **MOST PRECISE EDGE FINISH**
- **HIGHEST DEGREE OF PURITY**
- **EXCELLENT GEOMETRICAL PROPERTIES**
- **BETTER WEAR RESISTANCE**



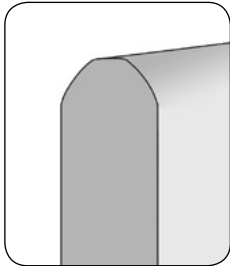


EDGES

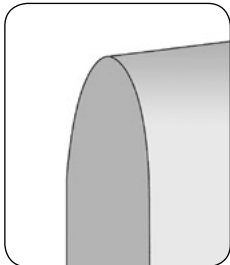
Reed steel can be delivered with a variety of edge finishes, to meet customer requirements. The choice of edge finish depends on the application; it also depends on steel grade, size and type of fabric as well.



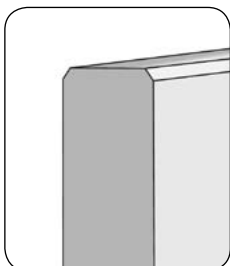
Round edge



Round tapered



Oval edge



Square edge with rounded corners

Chromium Steel – width 7 mm and 12 mm

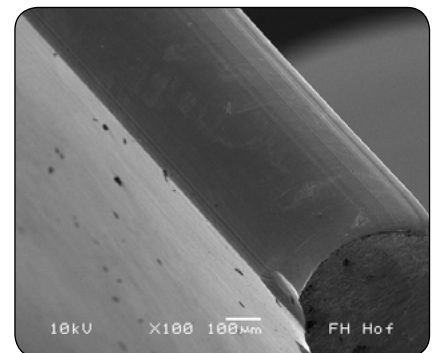
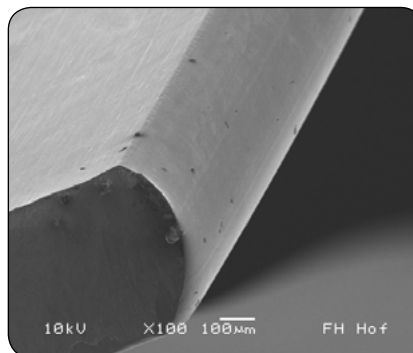
Thickness (mm)	Tolerance width (mm)	Tolerance thickness (mm)	Tensile strength (MPa)	Steel grade
< 0.025				
0.025- < 0.040				
0.040- < 0.076				
0.076- < 0.100	.+/- 0.02	./-0.003	1800 +/- 100	7C27Mo2
0.100- < 0.125	.+/- 0.02	./-0.003	1800 +/- 100	7C27Mo2
0.125- < 0.175	.+/- 0.02	./-0.003	1800 +/- 100	7C27Mo2
0.175- < 0.225	.+/- 0.02	./-0.004	1800 +/- 100	7C27Mo2
0.225- < 0.275	.+/- 0.02	./-0.004	1800 +/- 100	7C27Mo2
0.275- < 0.375	.+/- 0.02	./-0.005	1800 +/- 100	7C27Mo2
0.375- < 0.425	.+/- 0.02	./-0.006	1800 +/- 100	7C27Mo2
0.425- < 0.475	.+/- 0.02	./-0.006	1800 +/- 100	7C27Mo2
0.475- < 0.625	.+/- 0.02	./-0.007	1800 +/- 100	7C27Mo2
0.625- < 0.825	.+/- 0.02	./-0.008	1800 +/- 100	7C27Mo2
0.825- < 1.000	.+/- 0.02	./-0.010	1800 +/- 100	7C27Mo2
1.001- < 1.250*	./-0.02*	./-0.012*	1800 +/- 100*	7C27Mo2*
1.250- < 1.400*	./-0.02*	./-0.014*	1800 +/- 100*	7C27Mo2*

*12 mm only

Carbon Steel – width 7 mm and 12 mm

Thickness (mm)	Tolerance width (mm)	Tolerance thickness (mm)	Tensile strength (MPa)	Steel grade
< 0.025				
0.025- < 0.040				
0.040- < 0.076				
0.076- < 0.100	.+/- 0.02	./-0.003	2100 +/- 100	20C
0.100- < 0.125	.+/- 0.02	./-0.003	2100 +/- 100	20C
0.125- < 0.175	.+/- 0.02	./-0.003	2050 +/- 100	20C
0.175- < 0.225	.+/- 0.02	./-0.004	2000 +/- 100	20C
0.225- < 0.275	.+/- 0.02	./-0.004	1950 +/- 100	20C
0.275- < 0.375	.+/- 0.02	./-0.005	1900 +/- 100	20C
0.375- < 0.425	.+/- 0.02	./-0.006	1850 +/- 100	20C
0.425- < 0.475	.+/- 0.02	./-0.006	1800 +/- 100	20C
0.475- < 0.625	.+/- 0.02	./-0.007	1750 +/- 100	20C
0.625- < 0.825	.+/- 0.02	./-0.008	1700 +/- 100	20C
0.825- < 1.000	.+/- 0.02	./-0.010	1650 +/- 100	20C
1.001- < 1.250*			1500 +/- 100*	15LM*
1.250- < 1.575*			1500 +/- 100*	15LM*
1.575- < 1.830*			1450 +/- 100*	15LM*
1.830-*			1350 +/- 100*	15LM*

*12 mm only





The essential differences...

... are as follows:

- **exceptionally smooth surface**
- **highly densified material composition**
- **radii absolutely smooth and completely free of grooves due to a unique flange processing technique**

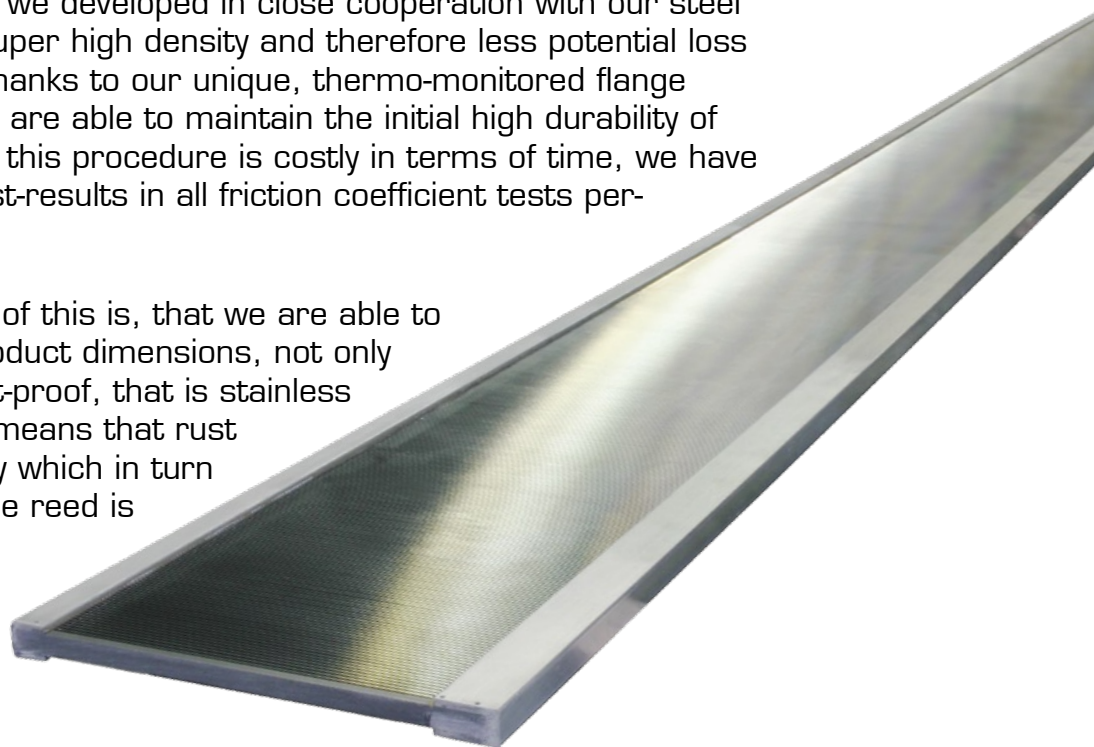
Please note the following explanations:

In order to successfully polish the surface of tempered steel immense force is necessary for the actual finishing of the flange. Due to these immense forces, the potential for deterioration of the material structure and density of the flange increases, particularly during strain caused by warp tension, possibly resulting in breakage and rough edges and causing damage to warp material.

Carbon steel is hardened via heat, may, however, lose its durability and become brittle and refractory, if, for example, it overheats during heavy polishing.

The special steel which we developed in close cooperation with our steel manufacturer, offers super high density and therefore less potential loss of original durability. Thanks to our unique, thermo-monitored flange finishing procedure, we are able to maintain the initial high durability of the material. Although this procedure is costly in terms of time, we have secured exceptional test-results in all friction coefficient tests performed.

Yet another advantage of this is, that we are able to offer all of our steel product dimensions, not only hardened, but also rust-proof, that is stainless steel; which of course means that rust caused by high humidity which in turn results in damage to the reed is no longer an issue.





Material	AWT eco	AWT standard	AWT tech	Steel grade	AWT Form
resistance to wear	+	+	++	+++	++++
tensile strength	850/1000	1000/1200	1200/1450	1400/1700	1650/2200
friction coefficient (dry)	+	+	++	+++	++++
abrasion resistance	+	+	+	++	++++
roughness	0,6	0,6	0,3	0,3	0,3
planning mm (t)	+	+	++	++	++++
twisting (V5)	+	+	+	+++	+++
width tolerance	+/- 0,05	+/- 0,05	0,03/0,05	0,03/0,05	0,03/0,05
thickness tolerance			+/- 0,005	+/- 0,005	+/- 0,005
sliding performance	+	+	++	+++	+++
corrosion-resistant	no	yes	yes	yes	yes, on demand

range of application	Textile Fabrics (no abrasive materials, e.g. silk, glass fibre, jute etc.)	Technical Fabrics Medical Fabrics Glass-, Plastic, Carbon-fibre-fabrics Carrier-grid for microelectronic and bulk-storage-industry	Technical Fabrics Medical Fabrics Plastic-Fabrics Filter for Paperindustry Forming Fabric Heavy-Fabrics Wire-Fabrics
information	High quality steel with a plain angle and good resistances to wear, polished	High quality steel with extra plain angles, equable high hardness and highest resistance to wear Best straightness and twisting-rating	

SURFACE	Standard	polished by machine, plain surface
	ELO	extreme plain polished surface by machine and polished edges, without transitions
FORM		machine polished, extreme smooth surface with most chamfering edges, absolutely burr-free and without any transition edges/surface ck-production, manually postprocessing and control
FIXATION	Standard binding-system	2-component adhesive, able to work under pressure, suitable for all Standards Textile/Technical
	repairable binding system CUOCOMP®	3-tier Epoxydresin-adhesive, able to work under pressure, repairable suitable for almost every range of application without heavy-fabrics/wire-fabrics
	HT3-binding-system	firmest, multistage special-binding-system for maximal fixedness

KUENZEL
advanced weaving technologies

www.kuenzel-awt.com

Kuenzel advanced weaving technologies GmbH

Kirchenlamitzer Straße 97 · D-95213 Münchberg / Germany

phone +49 92 51 30 81 · fax +49 92 51 38 93 · email info@kuenzel-awt.com