

TUMKALIP

SPARE PART CATALOGUE



www.tumkalip.com.tr

COMPANY PROFILE

İstanbul based TÜMKALIP Ltd has been manufacturing qualified spare parts for weaving machines.

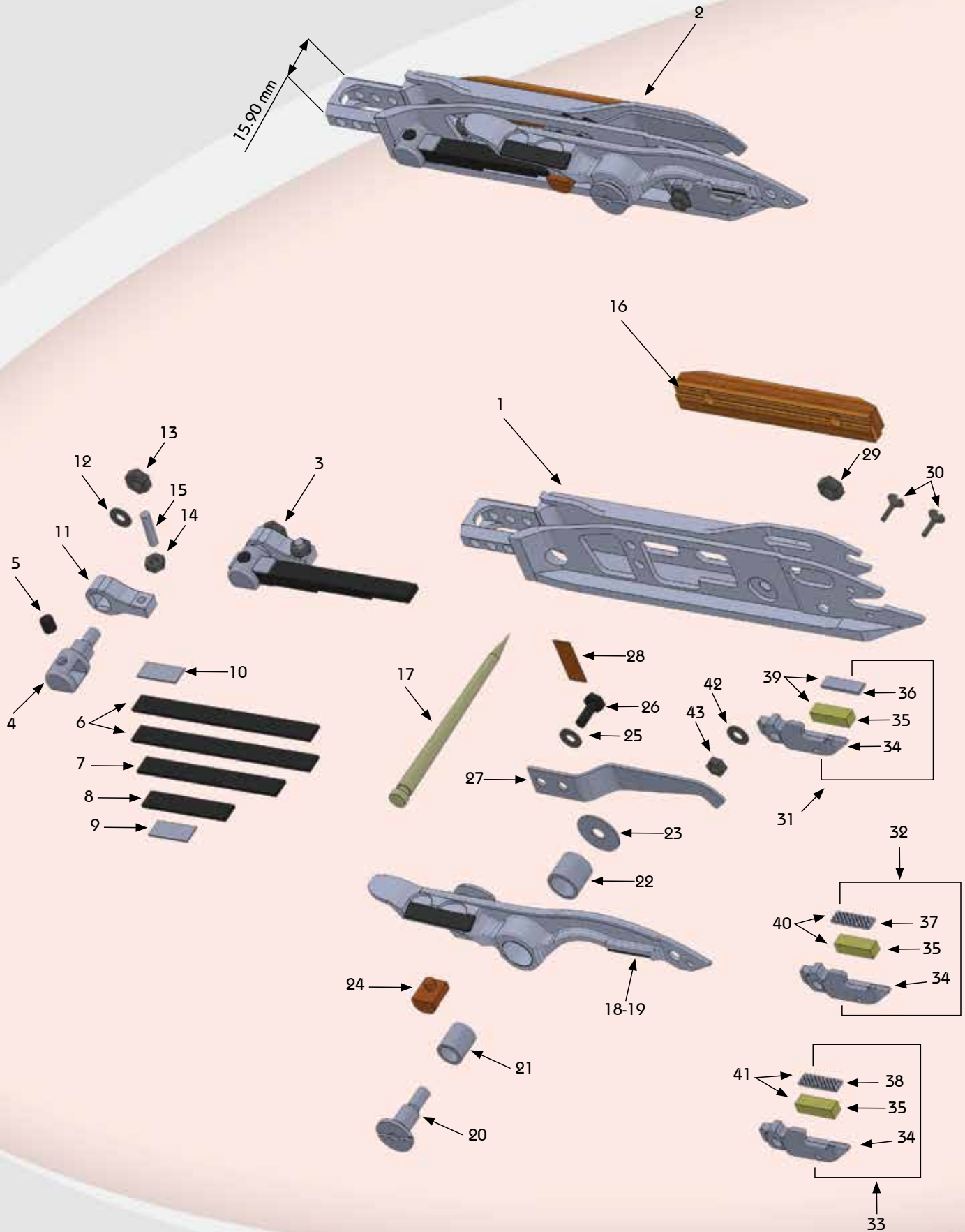
Tümer C. Uprak founder of TÜMKALIP, has started his carrier in 1970 as a reliability engineer at the biggest shipyard company in Turkey. Uprak who went to Japan with the state scholarship, was trained on manufacturing technologies during one year.

TÜMKALIP has a strong processing capacity. In its capacity there are, 4 axis Machining Centers, Lathes, Wire Edms, CNC Profile and cylindrical grinding and High Velocity Oxyfuel Thermal Coating Systems and High Technology Titanium Brazing.

Today TÜMKALIP manufactures spare parts for food and packaging industry and modern textile machinery. TÜMKALIP consists of an educated and specialized team.

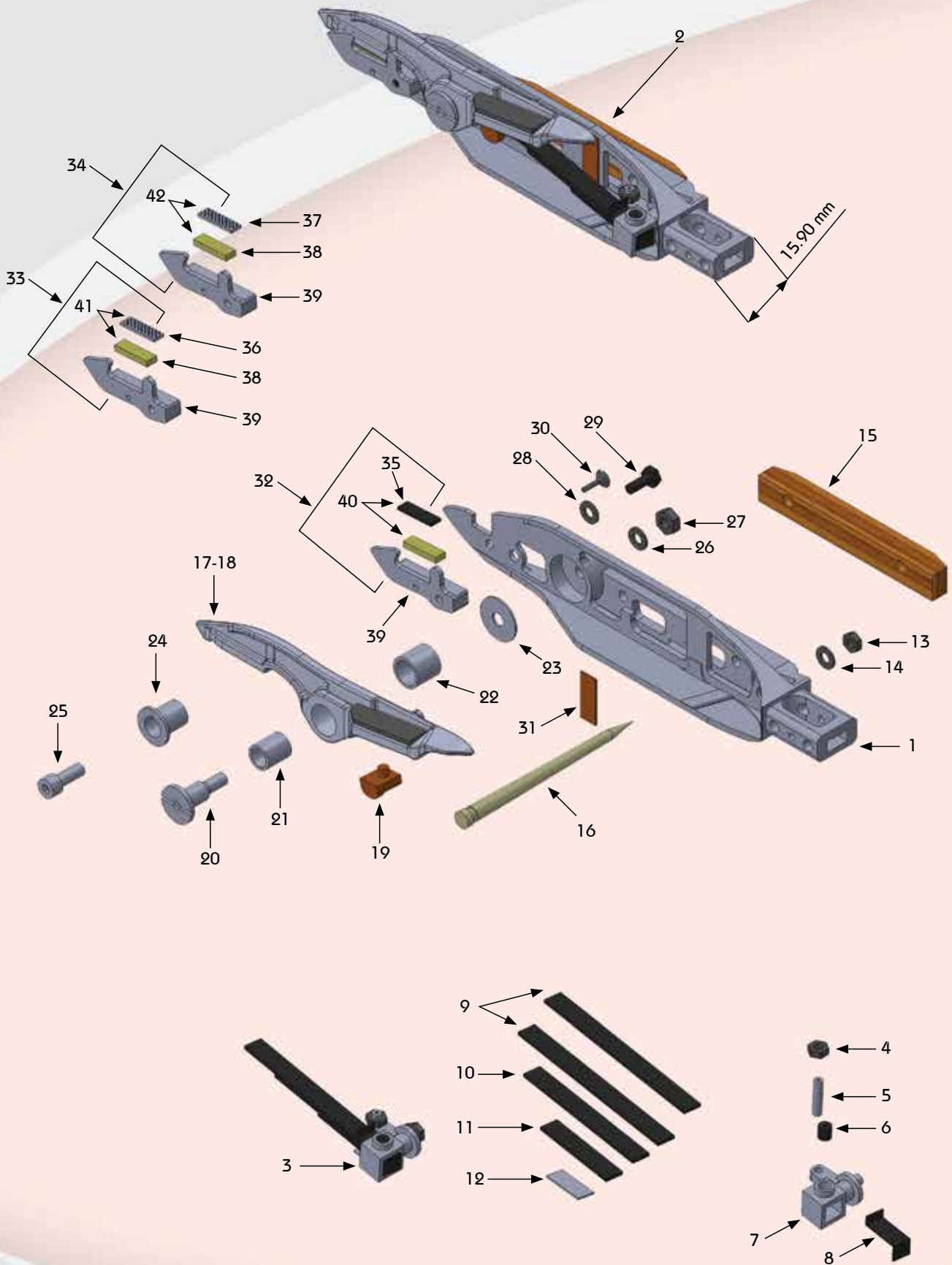
TÜMKALIP is located at a distance of 30 minutes drive from İstanbul Atatürk International Airport.

▶ RAPIER HEAD LHS 10 mm - G TYPE



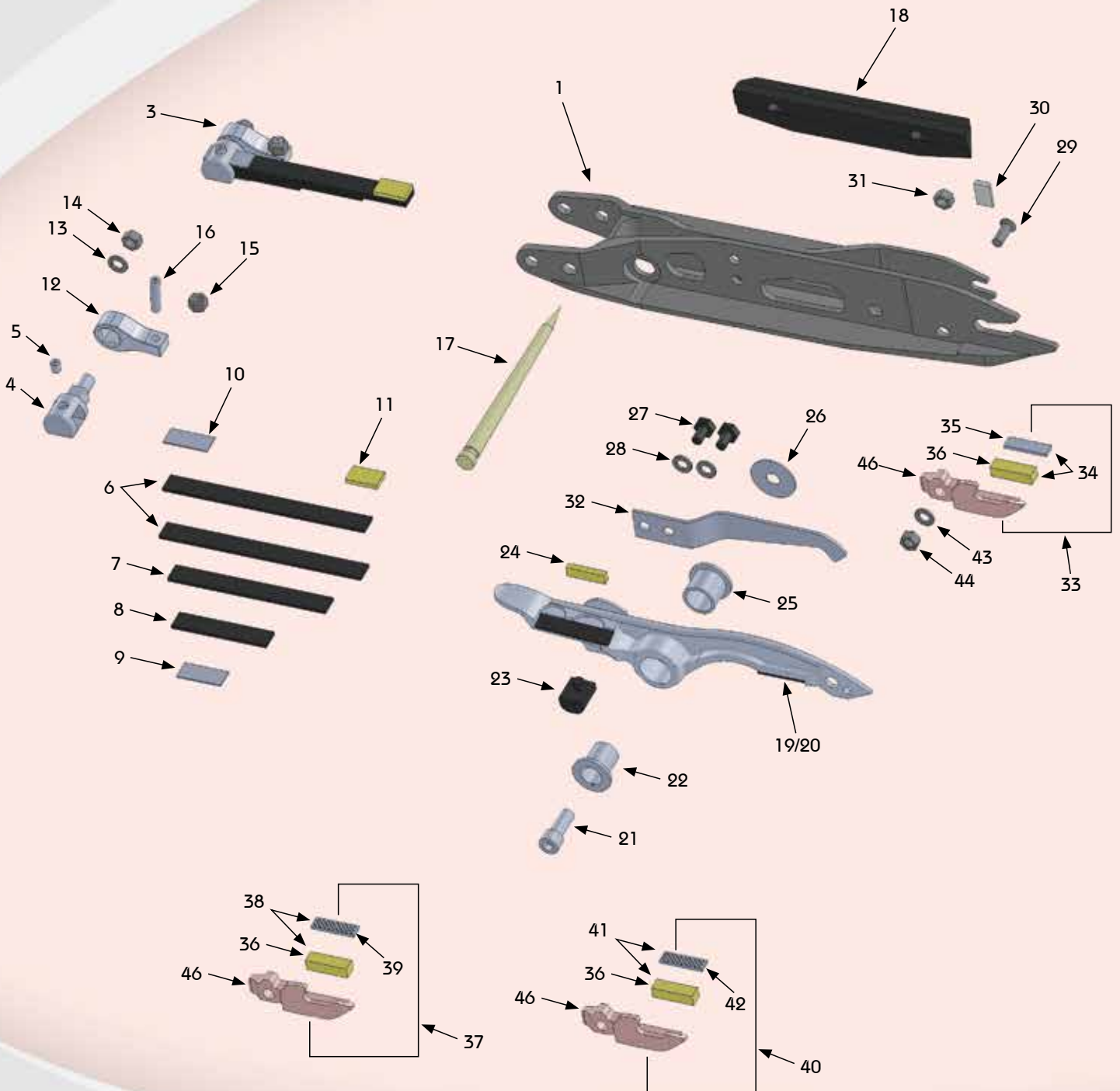
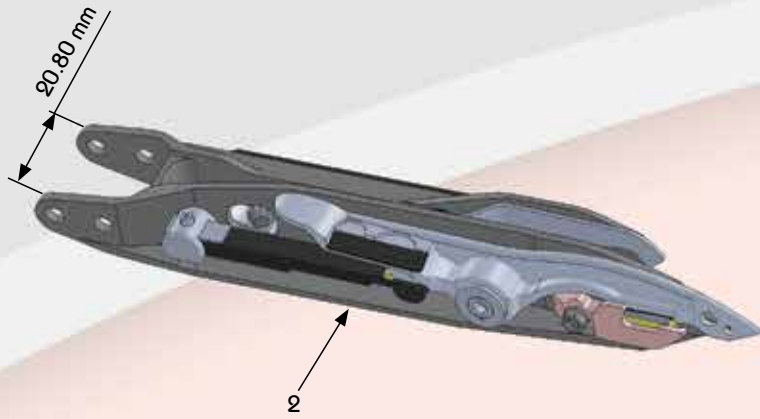
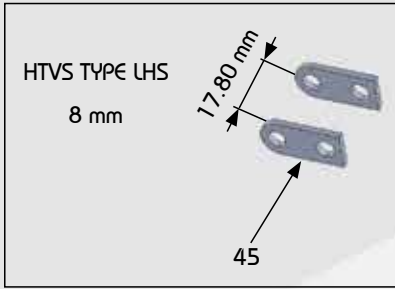
No	TK No	Art No	Designation
1	5100	714555	RAPIER HEAD BODY LHS 10mm OLD TYPE CHROME COATED
	5126		RAPIER HEAD BODY LHS 10mm OLD TYPE CERAMIC COATED
2	5101	764194	RAPIER HEAD LHS CPL.10mm Old Type Plain/Plain CHROME
	5102	764441	RAPIER HEAD LHS CPL.10mm Old Type Plain/Serrated CHROME
	5103	764443	RAPIER HEAD LHS CPL.10mm Old Type Plain/Solid Serrated CHROME
	5128		RAPIER HEAD LHS CPL.10mm Old Type Serrated/Solid Serrated CHROME
	5104		RAPIER HEAD LHS CPL.10mm Old Type Plain/Serrated CERAMIC
	5105		RAPIER HEAD LHS CPL.10mm Old Type Plain/Plain CERAMIC
	5106		RAPIER HEAD LHS CPL. 10mm Old Type Plain/Solid Serrated CERAMIC
3	5107	711895	CLAMPING SPRING LHS CPL.
4	5001	707873	CLAMPING BOLT LHS
5	5002	309758	HEADLESS SCREW
6	5005	322842	CLAMPING SPRING 1,1X6,0X64,0MM
7	5007	322843	CLAMPING SPRING 1,1X6,0X50,0MM
8	5008	322844	CLAMPING SPRING 1,1X6,0X30,0MM
9	5009	72833V	PROTECTION PLATE 0,1X6,0X14MM
10	6004	711576	PROTECTION PLATE 0,5X6,0X14MM
11	5014	769850	STOP PIECE
12	5015	301702	WASHER
13	5016	322316	HEXAGON NUT
14	5041	311206	HEXAGON NUT
15	5108	333285	HEADLESS SCREW
16	5111	335508	GUIDE PIECE LHS
17	5012	328321	LOCKING ELEMENT
18	5117	730225	10 mm Old Type CLAMPING LEVER LHS PLAIN(730228)
19	5118	730233	10 mm Old Type CLAMPING LEVER LHS SERRATED
20	5109	711900	BEARING BOLT
21	5110	471118	TUNGSTEN CARBIDE SLEEVE
22	5211	471117	TUNGSTEN CARBIDE BUSH 8x10x9
	5127	471117	BUSH 8x10x9 HSS
23	6014	334554	TUNGSTEN CARBIDE WASHER
24	5212	533023	START CAM
25	6007	341914	TIGHTENING DISK
26	5213	311179	HEXAGON SCREW
27	5209	767894	Line feed lever
28	6126	328090	GUIDE PLATE
29	5041	311206	HEXAGON NUT
30	5116	333041	COUNTERSUNK SCREW
31	5112	712311	CLAMPING SHEET LHS CPL. VULKOLLAN-HM PLAIN
32	5113	712312	CLAMPING SHEET LHS CPL. VULKOLLAN-HM SERRATED
33	5114	712313	CLAMPING SHEET LHS CPL. VULKOLLAN-HM FINE SERRATED
34	5122	853178	CLAMPING SHEET LHS
35	5115	533003	VULKOLLAN INSERT LHS
36	5119	471160	TUNGSTEN CARBIDE INSERT LHS PLAIN
37	5120	471196	TUNGSTEN CARBIDE INSERT LHS SERRATED
38	5121	471411	TUNGSTEN CARBIDE INSERT LHS FINE SERRATED
39	5123	708854	TUNGSTEN CARBIDE INSERT LHS CPL. VULKOLLAN-HM PLAIN
40	5124	708856	TUNGSTEN CARBIDE INSERT LHS CPL. VULKOLLAN-HM SERRATED
41	5125	708858	TUNGSTEN CARBIDE INSERT LHS CPL. VULKOLLAN-FINE SERRATED
42	5040	301701	WASHER
43	5041	311206	HEXAGON NUT

▶ RAPIER HEAD RHS 10 mm - G TYPE



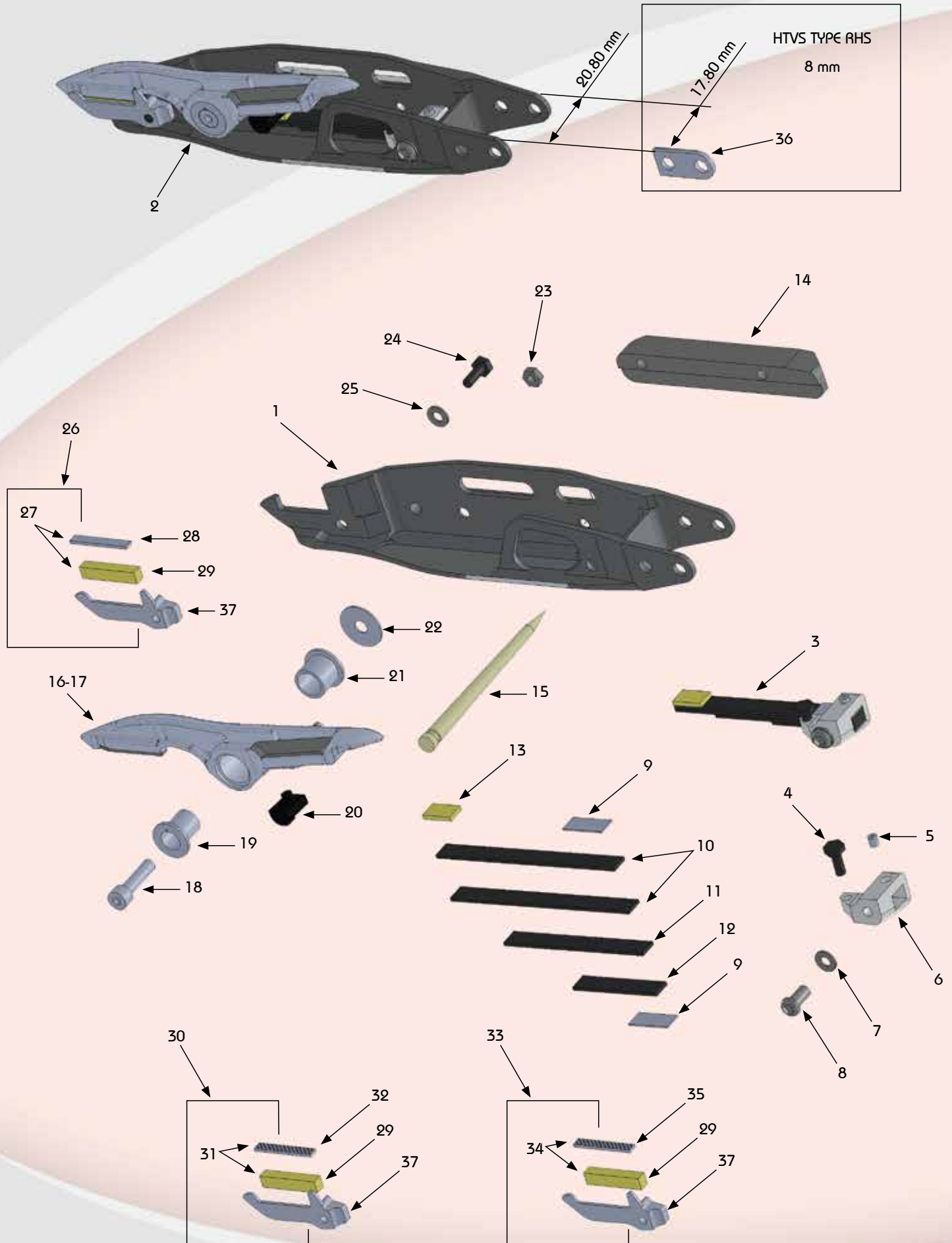
No	TK No	Art No	Designation
1	6100	767652	RAPIER HEAD BODY RHS 10mm OLD TYPE CHROME COATED
	6130		RAPIER HEAD BODY RHS 10mm OLD TYPE CERAMIC COATED
2	6101	764192	RAPIER HEAD RHS CPL.10mm Old Type Plain/Plain CHROME
	6102	764419	RAPIER HEAD RHS CPL.10mm Old Type Plain/Serrated CHROME
	6103	764436	RAPIER HEAD RHS CPL.10mm Old Type Plain/Solid Serrated CHROME
	6132		RAPIER HEAD RHS CPL.10mm Old Type Serrated/Solid Serrated CHROME
	6104		RAPIER HEAD RHS CPL.10mm Old Type Plain/Serrated CERAMIC
	6105		RAPIER HEAD RHS CPL.10mm Old Type Plain/Plain CERAMIC
	6106		RAPIER HEAD RHS CPL. 10mm Old Type Plain/Solid Serrated CERAMIC
3	6107	767872	CLAMPING SPRING RHS CPL.
4	5041	311206	HEXAGON NUT
5	6108	333285	HEADLESS SCREW
6	6002	309767	HEADLESS SCREW
7	6109	792378	CLAMPING BOLT
8	6110	410948	LOCKING PLATE
9	5005	322842	CLAMPING SPRING 1,1X6,0X64,0MM
10	5007	322843	CLAMPING SPRING 1,1X6,0X50,0MM
11	5008	322844	CLAMPING SPRING 1,1X6,0X30,0MM
12	5009	72833V	PROTECTION PLATE 0,1X6,0X14MM
13	6005	311208	HEXAGON NUT
14	6111	410652	CUP SPRING
15	6114	335507	GUIDE PIECE RHS
16	5012	328321	LOCKING ELEMENT
17	5217	764293	CLAMPING LEVER RHS PLAIN(764456)10 mm Old Type
18	5218	764454	CLAMPING LEVER RHS SERRATED 10 mm Old Type
19	5212	533023	START CAM
20	6112	711900	BEARING BOLT
21	6113	471118	BUSH 6x8x9,2
22	5211	471117	TUNGSTEN CARBIDE BUSH 8x10x9
	6131	471117	BUSH 8x10x9 HSS
23	6014	334554	TUNGSTEN CARBIDE WASHER
24	6017	333036	TUNGSTEN CARBIDE SLEEVE
25	6018	333318	SOCKET HEAD SCREW
26	6124	410393	LOCKING WASHER
27	6005	311208	HEXAGON NUT
28	6007	341914	TIGHTENING DISK
29	6123	311167	HEXAGON SCREW
30	6122	312048	COUNTERSUNK SCREW
31	6126	328090	GUIDE PLATE
32	6115	718862	CLAMPING SHEET RHS CPL. VULKOLLAN-HM PLAIN
33	6116	718863	CLAMPING SHEET RHS CPL. VULKOLLAN-HM SERRATED
34	6117	718864	CLAMPING SHEET RHS CPL. VULKOLLAN-HM FINE SERRATED
35	6118	471159	TUNGSTEN CARBIDE INSERT RHS PLAIN
36	6119	471191	TUNGSTEN CARBIDE INSERT RHS SERRATED
37	6120	471410	TUNGSTEN CARBIDE INSERT RHS FINE SERRATED
38	6121	533004	VULKOLLAN INSERT RHS
39	6125	720407	CLAMPING PLATE
40	6127	708855	TUNGSTEN CARBIDE INSERT RHS CPL. VULKOLLAN-HM PLAIN
41	6128	708857	TUNGSTEN CARBIDE INSERT RHS CPL. VULKOLLAN-HM SERRATED
42	6129	708859	TUNGSTEN CARBIDE INSERT RHS CPL. VULKOLLAN-FINE SERRATED

▶ RAPIER HEAD LHS 10 mm - HTV TYPE



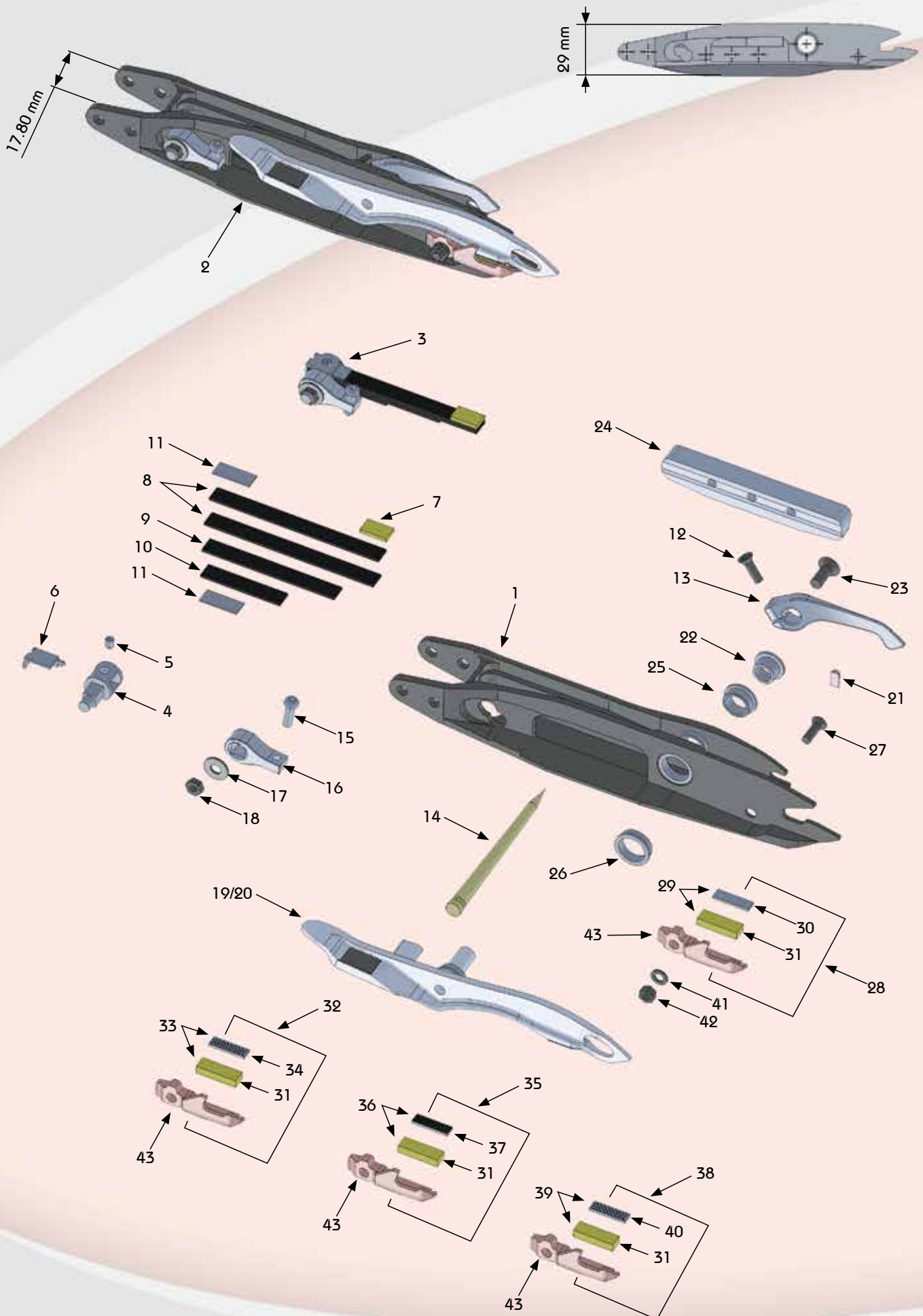
No	TK No	Art No	Designation
1	5200	70365Y	RAPIER HEAD BODY LHS 10mm CERAMIC COATED
	5300	70785K	RAPIER HEAD BODY LHS 10mm CHROME COATED
2	5201	70133X	RAPIER HEAD LHS CPL.10mm Plain/Plain CERAMIC
	5202	70218S	RAPIER HEAD LHS CPL.10mm Plain/Serrated CERAMIC
	5203	70134A	RAPIER HEAD LHS CPL.10mm Plain/Solid Serrated CERAMIC
	5301		RAPIER HEAD LHS CPL.10 mm Plain/Plain CHROME
	5302		RAPIER HEAD LHS CPL.10 mm Plain/Serrated CHROME
	5303		RAPIER HEAD LHS CPL.10 mm Plain/Solid Serrated CHROME
3	7004	711895	CLAMPING SPRING LHS COMPLETE
4	5001	707873	CLAMPING BOLT LHS
5	5002	309758	HEADLESS SCREW
6	5005	322842	CLAMPING SPRING 1,1X6,0X64,0MM
7	5007	322843	CLAMPING SPRING 1,1X6,0X50,0MM
8	5008	322844	CLAMPING SPRING 1,1X6,0X30,0MM
9	5009	72833V	PROTECTION PLATE 0,1X6,0X14MM
10	6004	711576	PROTECTION PLATE 0,5X6,0X14MM
11	5004	345444	VULKOLLAN INSERT 6,0X1,5X10,0MM
12	5014	769850	STOP PIECE
13	5015	301702	WASHER
14	5016	322316	HEXAGON NUT
15	5041	311206	HEXAGON NUT
16	5108	333285	HEADLESS SCREW
17	5012	328321	LOCKING ELEMENT
18	7006	341369	GUIDE PIECE LHS BLACK
19	5317	785813	10 mm CLAMPING LEVER LHS PLAIN (70388D)
20	5318	70218R	10 mm CLAMPING LEVER LHS SERRATED (787583)
21	6018	333318	SOCKET HEAD SCREW
22	6017	333036	TUNSTEN CARBIDE SLEEVE
23	5212	533023	START CAM
24	5223		VULKOLLAN PAD
25	6056		BUSH FOR CLAMP PIECE LHS TUNGSTEN 8/10/9
26	6014	334554	TUNSTEN CARBIDE WASHER
27	5207	311179	HEXAGON SCREW
28	5208	301701	WASHER
29	5029	345098	COUNTERSUNK SCREW
30	5210	450171	GUIDE PIECE
31	5016	322316	HEXAGON NUT
32	5209	767894	LINE FEED LEVER
33	5204	785172	CLAMP PIECE LHS CPL. PLAIN HTV
34	5220	765150	TUNGSTEN CARBIDE INS. LHS CPL. VULKOLLAN-PLAIN
35	5215	471160	TUNGSTEN CARBIDE INSERT LHS PLAIN
36	5214	334421	VULKOLLAN INSERT LHS
37	5205	70218P	CLAMP PIECE LHS CPL.SERRATED HTV
38	5221	765276	TUNGSTEN CARBIDE INS. LHS CPL. VULKOLLAN-SERRATED
39	5216	471196	TUNGSTEN CARBIDE INSERT LHS SERRATED
40	5206	765271	CLAMP PIECE LHS CPL. FINE SERRATED HTV
41	5222	765271	TUNGSTEN CARBIDE INS. LHS CPL. VULKOLLAN-FINE SERRATED
42	5219	471411	TUNGSTEN CARBIDE INSERT LHS FINE SERRATED
43	5040	301701	WASHER
44	5041	311206	HEXAGON NUT
45	5224		SIDE SUPPORT PLATE (21x1,5x9 mm)
46	5226		CLAMP PIECE LHS

▶ RAPIER HEAD RHS 10 mm - HTV TYPE



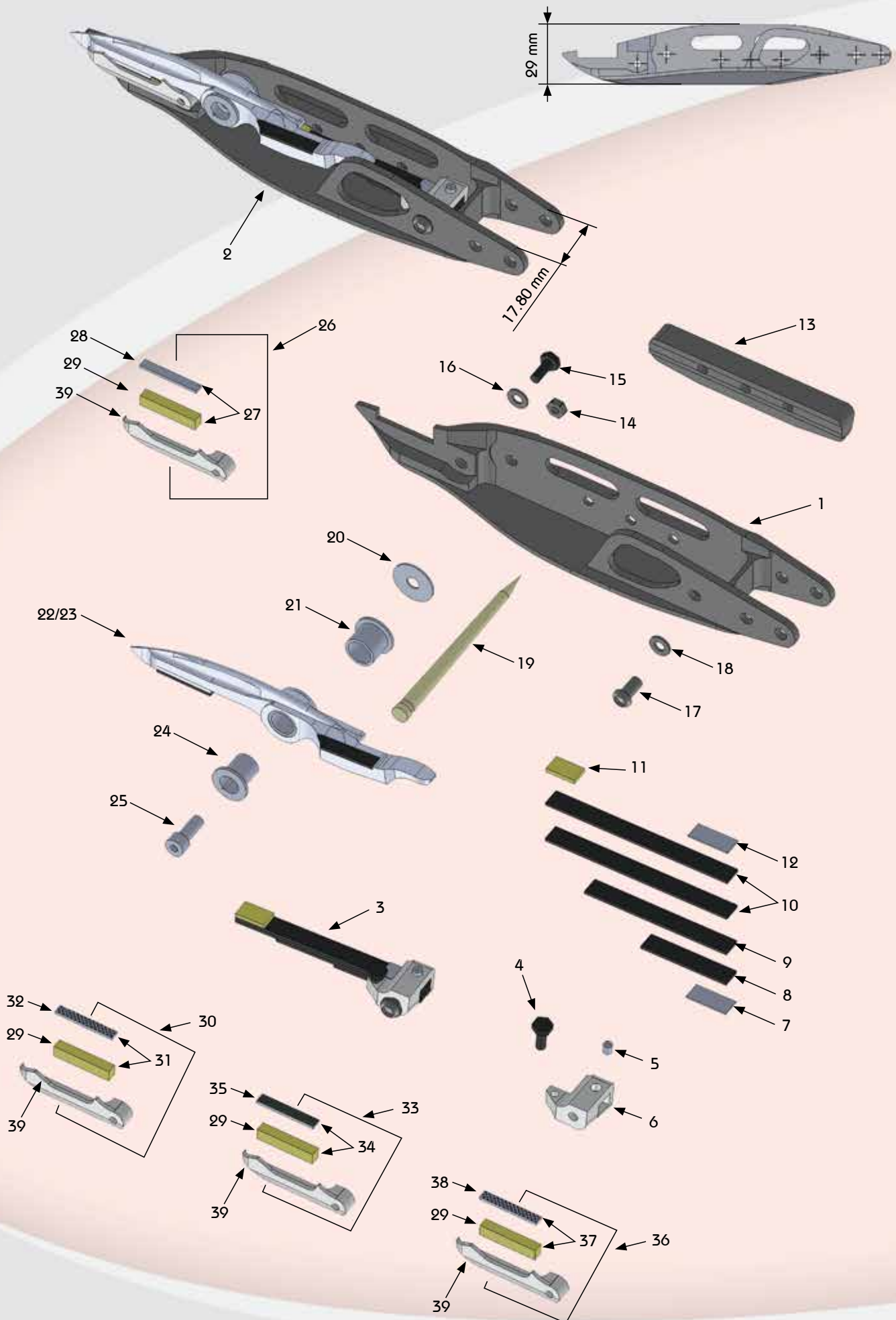
No	TK No	Art No	Designation
1	6200	70125A	RAPIER HEAD BODY RHS 10mm CERAMIC COATED
	6300	70785H	RAPIER HEAD BODY RHS 10mm CHROME COATED
2	6201	70133Y	RAPIER HEAD RHS CPL.10mm Plain/Plain CERAMIC
	6202	70218K	RAPIER HEAD RHS CPL.10mm Plain/Serrated CERAMIC
	6203	70133W	RAPIER HEAD RHS CPL.10mm Plain/Solid Serrated CERAMIC
	6301		RAPIER HEAD RHS CPL.10 mm Plain/Plain CHROME
	6302		RAPIER HEAD RHS CPL.10 mm Plain/Serrated CHROME
	6303		RAPIER HEAD RHS CPL.10 mm Plain/Solid Serrated CHROME
3	7005	767872	CLAMP SPRING RHS COMPLETE
4	6001	311184	HEXAGON SCREW
5	6002	309767	HEADLESS SCREW
6	6003	70744E	CLAMPING BOLT
7	5015	301702	WASHER
8	6012	311001	HEXAGON SCREW
9	6004	711576	PROTECTION PLATE 0,5X6,0X14MM
10	5005	322842	CLAMPING SPRING 1,1X6,0X64,0MM
11	5007	322843	CLAMPING SPRING 1,1X6,0X50,0MM
12	5008	322844	CLAMPING SPRING 1,1X6,0X30,0MM
13	5004	345444	VULKOLLAN INSERT 6,0X1,5X10,0MM
14	7007	341370	GUIDE PIECE RHS 11.0X9.3X72.0mm BLACK
15	5012	328321	LOCKING ELEMENT
16	5417	785819	10 mm CLAMPING LEVER RHS PLAIN
17	5418	70218H	10 mm CLAMPING LEVER RHS SERRATED
18	6018	333318	SOCKET HEAD SCREW
19	6017	333036	TUNGSTEN CARBIDE SLEEVE
20	5212	533023	START CAM
21	6056		BUSH FOR CLAMP PIECE RHS TUNGSTEN 8/10/9
22	6014	334554	TUNGSTEN CARBIDE WASHER
23	6005	311208	HEXAGON NUT
24	6006	310943	HEXAGON SCREW
25	6007	341914	TIGHTENING DISK
26	6204	785143	CLAMP PIECE RHS CPL PLAIN
27	6020	70879T	TUNGSTEN CARBIDE INSERT RHS CPL VULKOLLAN-HM PLAIN
28	6021	343904	TUNGSTEN CARBIDE INSERT RHS 0,70X3,50X22 MM PLAIN
29	6022	343905	VULKOLLAN INSERT RHS 3,50X3,50X20 MM
30	6205	70218G	CLAMP PIECE RHS CPL SERRATED
31	6024	70940Y	TUNGSTEN CARBIDE INSERT RHS CPL VULKOLLAN-HM SERRATED
32	6025	344104	TUNGSTEN CARBIDE INSERT RHS 0,8X3,50X22 MM SERRATED
33	6206	787366	CLAMP PIECE RHS CPL FINE SERRATED
34	6208	787396	TUNGSTEN CARBIDE INSERT RHS CPL. VULKOLLAN-HM FINE SERRATED
35	6207	338237	TUNGSTEN CARBIDE INSERT RHS 0,8X3,50X22 MM FINE SERRATED
36	5225		SIDE SUPPORT PLATE (21x3x9 mm)
37	6209		CLAMP PIECE RHS

▶ RAPIER HEAD LHS 8 mm - HTVS TYPE



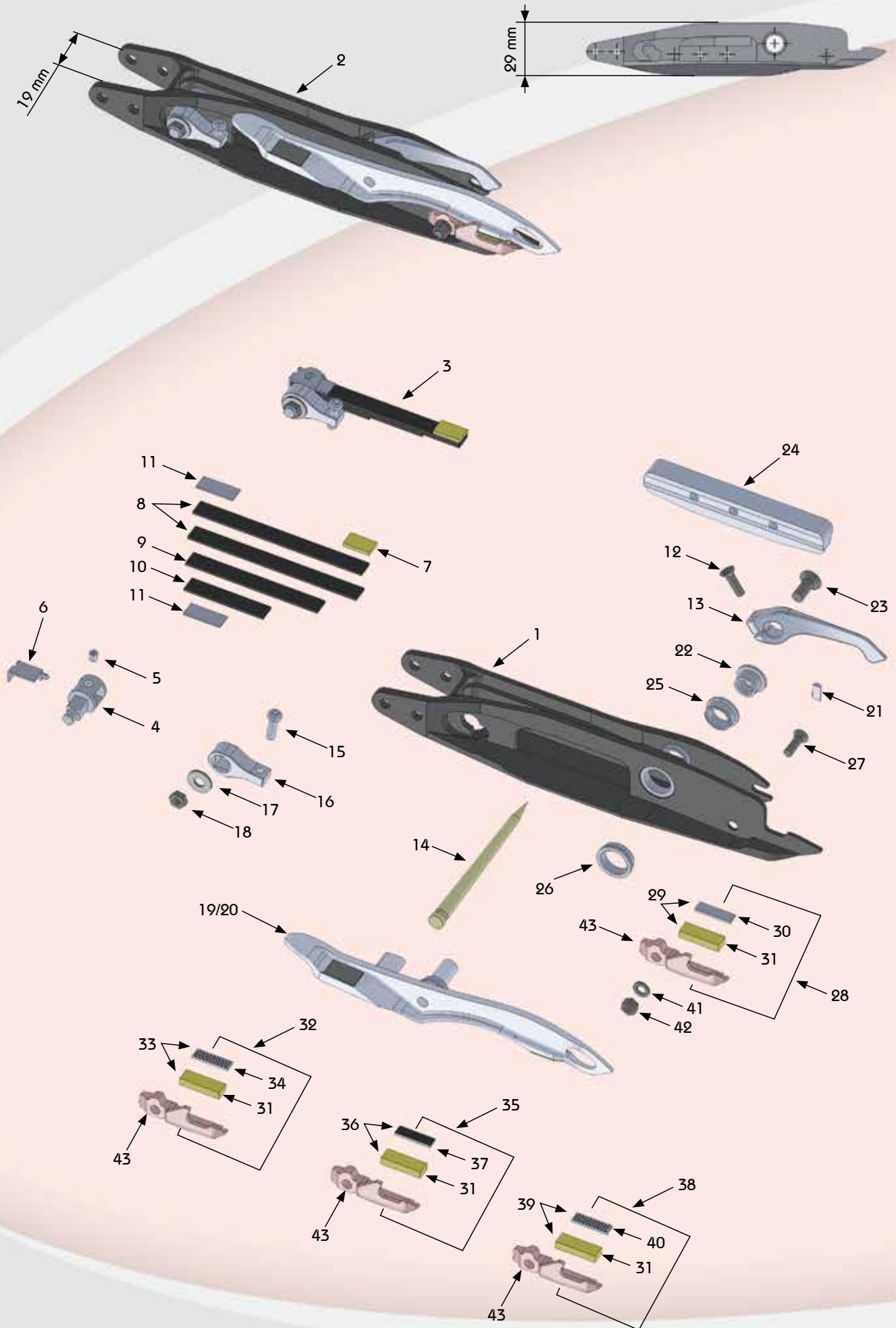
No	TK No	Art No	Designation
1	5400	71861K	RAPIER HEAD BODY LHS 8mm CERAMIC COATED
	5500	71210G	RAPIER HEAD BODY LHS 8mm CHROME COATED
2	5401	71161R	RAPIER HEAD LHS CPL. 8mm Plain/Plain CERAMIC
	5402		RAPIER HEAD LHS CPL. 8mm Plain/Serrated CERAMIC
	5403	71161X	RAPIER HEAD LHS CPL. 8mm Plain/Solid Serrated CERAMIC
	5501		RAPIER HEAD LHS CPL. 8mm FLAT Plain/Plain CHROME
	5502		RAPIER HEAD LHS CPL. 8mm FLAT Plain/Serrated CHROME
	5503		RAPIER HEAD LHS CPL. 8mm FLAT Plain/Solid Serrated CHROME
3	5000	70861H	CLAMPING SPRING LHS CPL.
4	5001	707873	CLAMPING BOLT LHS
5	5002	309758	HEADLESS SCREW
6	5003	345941	CLAMP
7	5004	345444	VULKOLLAN INSERT 6,0X1,5X10,0MM
8	5005	322842	CLAMPING SPRING 1,1X6,0X64,0MM
9	5007	322843	CLAMPING SPRING 1,1X6,0X50,0MM
10	5008	322844	CLAMPING SPRING 1,1X6,0X30,0MM
11	5009	72833V	PROTECTION PLATE 0,1X6,0X14MM
12	5010	345098	COUNTERSUNK SCREW
13	5011	70861E	LINE FEED LEVER
14	5012	328321	LOCKING ELEMENT
15	5013	338999	OVAL HEAD SCREW
16	5014	769850	STOP PIECE
17	5015	301702	WASHER
18	5016	322316	HEXAGON NUT
19	5017	71246V	CLAMPING LEVER LHS CPL SOLID PLAIN WITH
20	5019	71297P	CLAMPING LEVER LHS CPL SOLID SERRATED WITH
21	5025	450124	THREAD GUIDE PIN
22	5026	341167	TUNGSTEN CARBIDE SLEEVE
23	5027	345105	COUNTERSUNK SCREW
24	5028	343743	GUIDE PIECE 8,3X12,0X68,0MM SINTIMID BLACK
25	5064		BUSH 8/10/4,20 Tungsten Carbide for Rapier body LHS
26	5065		BUSH 10/12/3,2 Tungsten Carbide for Rapier body LHS
27	5029	345098	COUNTERSUNK SCREW
28	5030	71199G	CLAMP PIECE LHS CPL. VULKOLLAN-HM PLAIN
29	5031	70688C	TUNGSTEN CARBIDE INS.LHS CPL.VULKOLLAN-HM PLAIN
30	5032	342823	TUNSTEN CARBIDE INSERT LHS 5,0X0,7X16,0MM PLAIN
31	5033	342827	VULKOLLAN INSERT LHS 5,0X3,5X16,0MM
32	5034	71199H	CLAMP PIECE LHS CPL. VULKOLLAN-HM SERRATED
33	5035	70687Y	TUNSTEN CARBIDE INS.LHS CPL.VULKOLLAN-HM SERRATED
34	5036	342825	TUNSTEN CARBIDE INSERT LHS 5,0X0,8X16,0MM SERRATED
35	5037	72544R	CLAMP PIECE LHS CPL.VULKOLLAN - HM LENGTHWAYS GROOVED
36	5038	72544P	TUNGSTEN CARBIDE INS.LHSCPL VULKOLLAN HM LENGTHWAYS GROOVED
37	5039	348714	TUNGSTEN CARBIDE INS.LHS 5X0,80X16 MM LENGTHWAYS GROOVED
38	5066		CLAMP PIECE LHS CPL.VULKOLLAN - HM FINE SERRATED
39	5067		TUNGSTEN CARBIDE INS.LHSCPL VULKOLLAN HM FINE SERRATED
40	5068		TUNGSTEN CARBIDE INS.LHS 5X0,80X16 MM FINE SERRATED
41	5040	301701	WASHER
42	5041	311206	HEXAGON NUT
43	5226	311206	CLAMP PIECE LHS

▶ RAPIER HEAD RHS 8 mm - HTVS TYPE



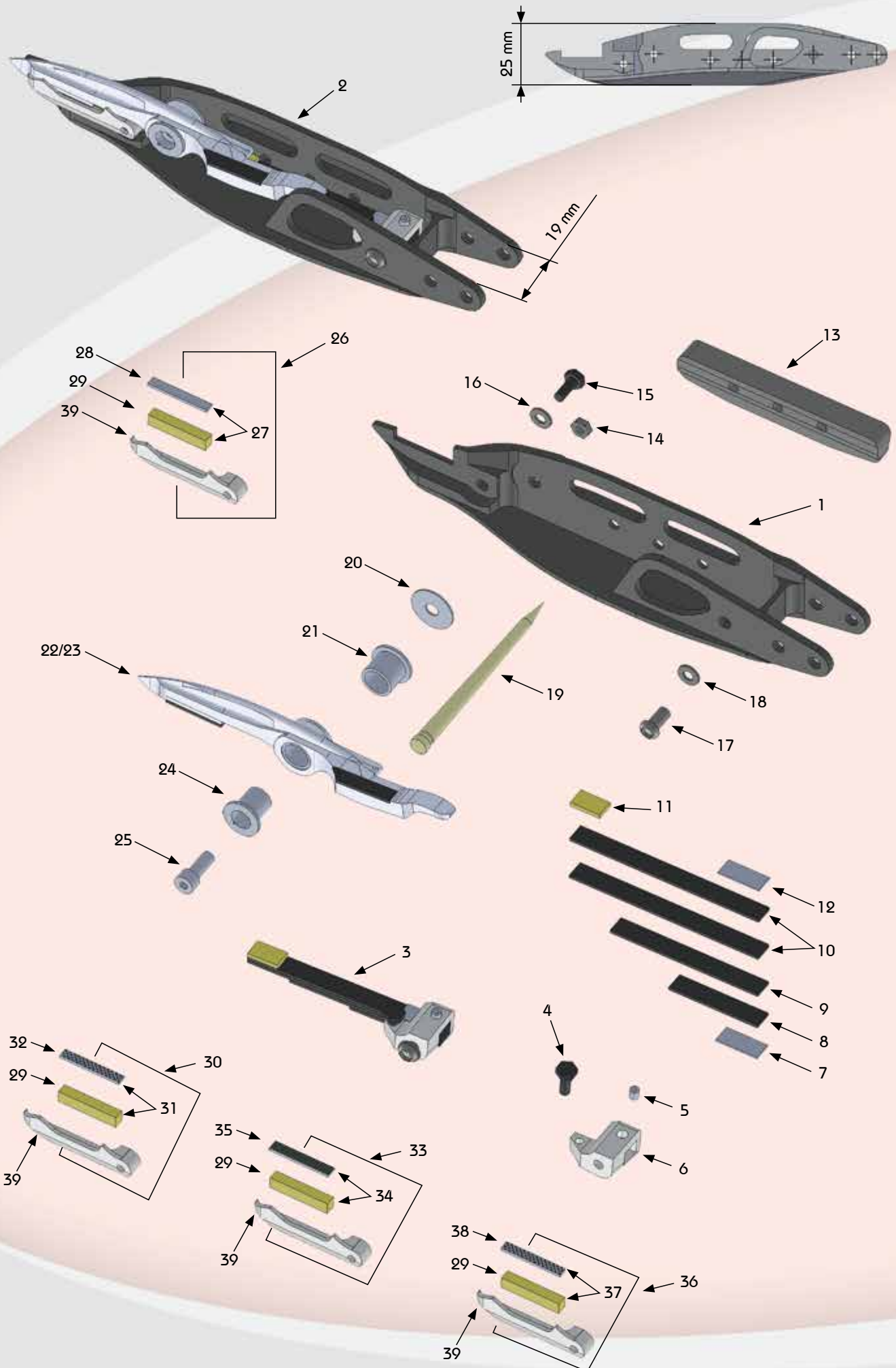
No	TK No	Art No	Designation
1	6400	72085M	RAPIER HEAD BODY RHS 8mm CERAMIC COATED
	6500	71707N	RAPIER HEAD BODY RHS 8mm CHROME COATED
2	6401	71161W	RAPIER HEAD RHS CPL. 8 mm Plain/Plain CERAMIC
	6402	71162B	RAPIER HEAD RHS CPL. 8 mm Plain/Serrated CERAMIC
	6403		RAPIER HEAD RHS CPL. 8 mm Plain/Solid Serrated CERAMIC
	6501		RAPIER HEAD RHS CPL. 8 mm Plain/Plain CHROME
	6502		RAPIER HEAD RHS CPL. 8 mm Plain/Serrated CHROME
	6503		RAPIER HEAD RHS CPL. 8 mm Plain/Solid Serrated CHROME
3	6000	70860K	CLAMPING SPRING RHS CPL.
4	6001	311184	HEXAGON SCREW
5	6002	309767	HEADLESS SCREW
6	6003	70744E	CLAMPING BOLT
7	5009	72833V	PROTECTION PLATE 0,1X6,0X14MM
8	5008	322844	CLAMPING SPRING 1,1X6,0X30,0MM
9	5007	322843	CLAMPING SPRING 1,1X6,0X50,0MM
10	5005	322842	CLAMPING SPRING 1,1X6,0X64,0MM
11	5004	345444	VULKOLLAN INSERT 6,0X1,5X10,0MM
12	6004	711576	PROTECTION PLATE 0,5X6,0X14MM
13	5028	343743	GUIDE PIECE 8,3X12,0X68,0MM SINTIMID BLACK
14	6005	311208	HEXAGON NUT
15	6006	310943	HEXAGON SCREW
16	6007	341914	TIGHTENING DISK
17	6012	311001	HEXAGON SCREW
18	5015	301702	WASHER
19	5012	328321	LOCKING ELEMENT
20	6014	334554	TUNGSTEN CARBIDE WASHER
21	6056		BUSH FOR CLAMP PIECE RHS TUNGSTEN 8/10/9
22	6015	71247B	CLAMPING LEVER RHS CPL.SOLID PLAIN
23	6016	71297W	CLAMPING LEVER RHS CPL.SOLID SERRATED
24	6017	333036	TUNGSTEN CARBIDE SLEEVE
25	6018	333318	SOCKET HEAD SCREW
26	6019	70985L	CLAMP PIECE RHS CPL.VULKOLLAN-HM PLAIN
27	6020	70879T	TUNGSTEN CARBIDE INSERT RHS CPL. VULKOLLAN-HM PLAIN
28	6021	343904	TUNGSTEN CARBIDE INSERT RHS 0,70X3,50X22 MM PLAIN
29	6022	343905	VULKOLLAN INSERT RHS 3,50X3,50X20 MM
30	6023	71203M	CLAMP PIECE RHS CPL.VULKOLLAN-HM SERRATED
31	6024	70940Y	TUNGSTEN CARBIDE INSERT RHS CPL VULKOLLAN-HM SERRATED
32	6025	344104	TUNGSTEN CARBIDE INSERT RHS 0,8X3,50X22 MM SERRATED
33	6026	72545P	CLAMPING PIECE RHS CPL. VULKOLLAN - HM LENGTHWAYS GROOVED
34	6027	72545N	TUNGSTEN CARBIDE INSERT RHS CPL.VULKOLLAN -HN LENGTHWAYS GROOVED
35	6028	348715	TUNGSTEN CARBIDE INSERT RHS 0,8X3,50X22 MM LENGTHWAYS GROOVED
36	6057		CLAMP PIECE RHS CPL.VULKOLLAN - HM FINE SERRATED
37	6208	787396	TUNGSTEN CARBIDE INSERT RHS CPL. VULKOLLAN-HM FINE SERRATED
38	6207	338237	TUNGSTEN CARBIDE INSERT RHS 0,8X3,50X22 MM FINE SERRATED
39	6209		CLAMP PIECE RHS

▶ RAPIER HEAD LHS 9 mm - PTV-PTS TYPE



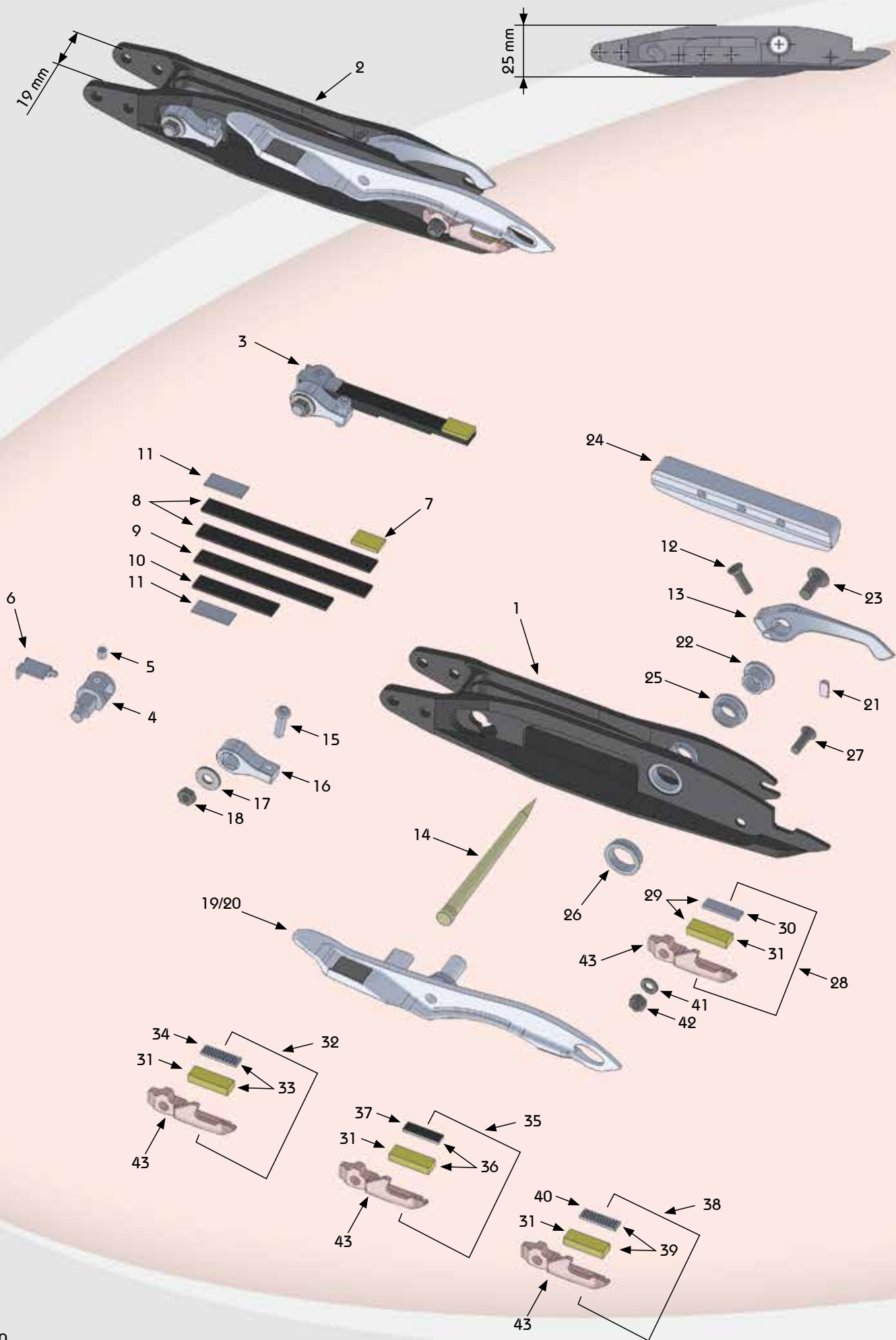
No	TK No	Art No	Designation
1	5021	71328L	RAPIER HEAD BODY LHS 9mm CERAMIC COATED
	5024	71617G	RAPIER HEAD BODY LHS 9 mm CHROME COATED
2	5042	71328H	RAPIER HEAD LHS CPL.9mm Plain/Plain CERAMIC
	5050	71781L	RAPIER HEAD LHS CPL. 9mm Plain/Serrated CERAMIC
	5052	72544N	RAPIER HEAD LHS CPL.9mm Plain/lengthways groove CERAMIC
	5044	71617F	RAPIER HEAD LHS CPL. 9mm Plain/Plain CHROME
	5046	71782G	RAPIER HEAD LHS CPL. 9mm Plain/Serrated CHROME
	5047		RAPIER HEAD LHS CPL.9mm Plain/lengthways groove CHROME
3	5000	70861H	CLAMPING SPRING LHS CPL.
4	5001	707873	CLAMPING BOLT LHS
5	5002	309758	HEADLESS SCREW
6	5003	345941	CLAMP
7	5004	345444	VULKOLLAN INSERT 6,0X1,5X10,0MM
8	5005	322842	CLAMPING SPRING 1,1X6,0X64,0MM
9	5007	322843	CLAMPING SPRING 1,1X6,0X50,0MM
10	5008	322844	CLAMPING SPRING 1,1X6,0X30,0MM
11	5009	72833V	PROTECTION PLATE 0,1X6,0X14MM
12	5010	345098	COUNTERSUNK SCREW
13	5011	70861E	LINE FEED LEVER
14	5012	328321	LOCKING ELEMENT
15	5013	338999	OVAL HEAD SCREW
16	5014	769850	STOP PIECE
17	5015	301702	WASHER
18	5016	322316	HEXAGON NUT
19	5017	71246V	CLAMPING LEVER LHS CPL SOLID PLAIN WITH
20	5019	71297P	CLAMPING LEVER LHS CPL SOLID SERRATED WITH
21	5025	450124	THREAD GUIDE PIN
22	5026	341167	TUNGSTEN CARBIDE SLEEVE
23	5027	345105	COUNTERSUNK SCREW
24	5028	343743	GUIDE PIECE 8,3X12,0X68,0MM SINTIMID BLACK
25	5064		BUSH 8/10/4,20 Tungsten Carbide for Rapier body LHS
26	5065		BUSH 10/12/3,2 Tungsten Carbide for Rapier body LHS
27	5029	345098	COUNTERSUNK SCREW
28	5030	71199G	CLAMP PIECE LHS CPL. VULKOLLAN-HM PLAIN
29	5031	70688C	TUNGSTEN CARBIDE INS.LHS CPL.VULKOLLAN-HM PLAIN
30	5032	342823	TUNSTEN CARBIDE INSERT LHS 5,0X0,7X16,0MM PLAIN
31	5033	342827	VULKOLLAN INSERT LHS 5,0X3,5X16,0MM
32	5034	71199H	CLAMP PIECE LHS CPL. VULKOLLAN-HM SERRATED
33	5035	70687Y	TUNSTEN CARBIDE INS.LHS CPL.VULKOLLAN-HM SERRATED
34	5036	342825	TUNSTEN CARBIDE INSERT LHS 5,0X0,8X16,0MM SERRATED
35	5037	72544R	CLAMP PIECE LHS CPL.VULKOLLAN - HM LENGTHWAYS GROOVED
36	5038	72544P	TUNGSTEN CARBIDE INS.LHSCPL VULKOLLAN HM LENGTHWAYS GROOVED
37	5039	348714	TUNGSTEN CARBIDE INS.LHS 5X0,80X16 MM LENGTHWAYS GROOVED
38	5066		CLAMP PIECE LHS CPL.VULKOLLAN - HM FINE SERRATED
39	5067		TUNGSTEN CARBIDE INS.LHSCPL VULKOLLAN HM FINE SERRATED
40	5068		TUNGSTEN CARBIDE INS.LHS 5X0,80X16 MM FINE SERRATED
41	5040	301701	WASHER
42	5041	311206	HEXAGON NUT
43	5226		CLAMP PIECE RHS

▶ RAPIER HEAD RHS 9 mm - PTV-PTS TYPE



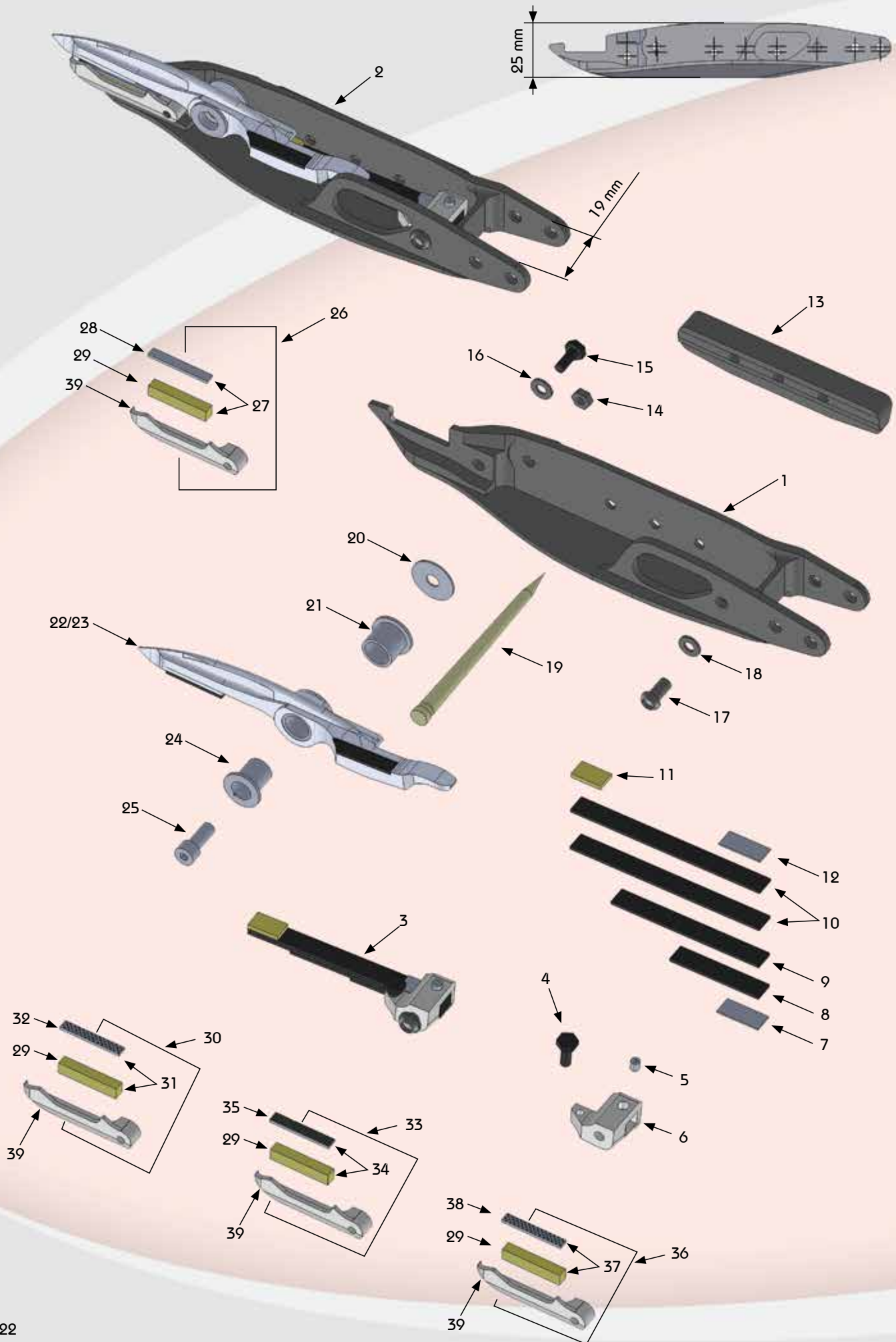
No	TK No	Art No	Designation
1	6008	71928X	RAPIER HEAD BODY RHS 9 mm CERAMIC COATED
	6011	71617H	RAPIER HEAD BODY RHS 9 mm CHROME COATED
2	6042	71328K	RAPIER HEAD RHS CPL.9mm Plain/Plain CERAMIC
	6050	71781P	RAPIER HEAD RHS CPL. 9mm Plain/Serrated CERAMIC
	6052	72545M	RAPIER HEAD RHS CPL.9mm Plain/lengthways groove CERAMIC
	6044	71617L	RAPIER HEAD RHS CPL. 9mm Plain/Plain CHROME
	6046	71782B	RAPIER HEAD RHS CPL. 9mm Plain/Serrated CHROME
	6047		RAPIER HEAD RHS CPL.9mm Plain/lengthways groove CHROME
3	6000	70860K	CLAMPING SPRING RHS CPL.
4	6001	311184	HEXAGON SCREW
5	6002	309767	HEADLESS SCREW
6	6003	70744E	CLAMPING BOLT
7	5009	72833V	PROTECTION PLATE 0,1X6,0X14MM
8	5008	322844	CLAMPING SPRING 1,1X6,0X30,0MM
9	5007	322843	CLAMPING SPRING 1,1X6,0X50,0MM
10	5005	322842	CLAMPING SPRING 1,1X6,0X64,0MM
11	5004	345444	VULKOLLAN INSERT 6,0X1,5X10,0MM
12	6004	711576	PROTECTION PLATE 0,5X6,0X14MM
13	5028	343743	GUIDE PIECE 8,3X12,0X68,0MM SINTIMID BLACK
14	6005	311208	HEXAGON NUT
15	6006	310943	HEXAGON SCREW
16	6007	341914	TIGHTENING DISK
17	6012	311001	HEXAGON SCREW
18	5015	301702	WASHER
19	5012	328321	LOCKING ELEMENT
20	6014	334554	TUNGSTEN CARBIDE WASHER
21	6056		BUSH FOR CLAMP PIECE RHS TUNGSTEN 8/10/9
22	6015	71247B	CLAMPING LEVER RHS CPL.SOLID PLAIN
23	6016	71297W	CLAMPING LEVER RHS CPL.SOLID SERRATED
24	6017	333036	TUNGSTEN CARBIDE SLEEVE
25	6018	333318	SOCKET HEAD SCREW
26	6019	70985L	CLAMP PIECE RHS CPL.VULKOLLAN-HM PLAIN
27	6020	70879T	TUNGSTEN CARBIDE INSERT RHS CPL. VULKOLLAN-HM PLAIN
28	6021	343904	TUNGSTEN CARBIDE INSERT RHS 0,70X3,50X22 MM PLAIN
29	6022	343905	VULKOLLAN INSERT RHS 3,50X3,50X20 MM
30	6023	71203M	CLAMP PIECE RHS CPL.VULKOLLAN-HM SERRATED
31	6024	70940Y	TUNGSTEN CARBIDE INSERT RHS CPL VULKOLLAN-HM SERRATED
32	6025	344104	TUNGSTEN CARBIDE INSERT RHS 0,8X3,50X22 MM SERRATED
33	6026	72545P	CLAMPING PIECE RHS CPL. VULKOLLAN - HM LENGTHWAYS GROOVED
34	6027	72545N	TUNGSTEN CARBIDE INSERT RHS CPL.VULKOLLAN -HM LENGTHWAYS GROOVED
35	6028	348715	TUNGSTEN CARBIDE INSERT RHS 0,8X3,50X22 MM LENGTHWAYS GROOVED
36	6057		CLAMP PIECE RHS CPL.VULKOLLAN - HM FINE SERRATED
37	6208	787396	TUNGSTEN CARBIDE INSERT RHS CPL. VULKOLLAN-HM FINE SERRATED
38	6207	338237	TUNGSTEN CARBIDE INSERT RHS 0,8X3,50X22 MM FINE SERRATED
39	6209		CLAMP PIECE RHS

▶ RAPIER HEAD LHS 9 mm FLAT - PTV-PTS TYPE

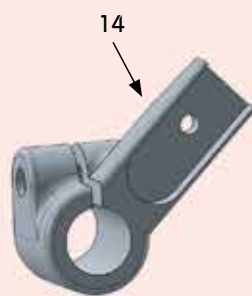
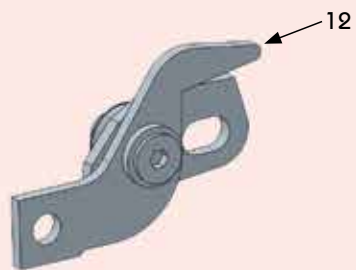
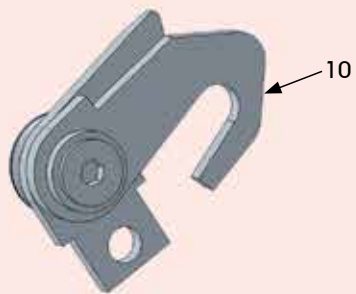
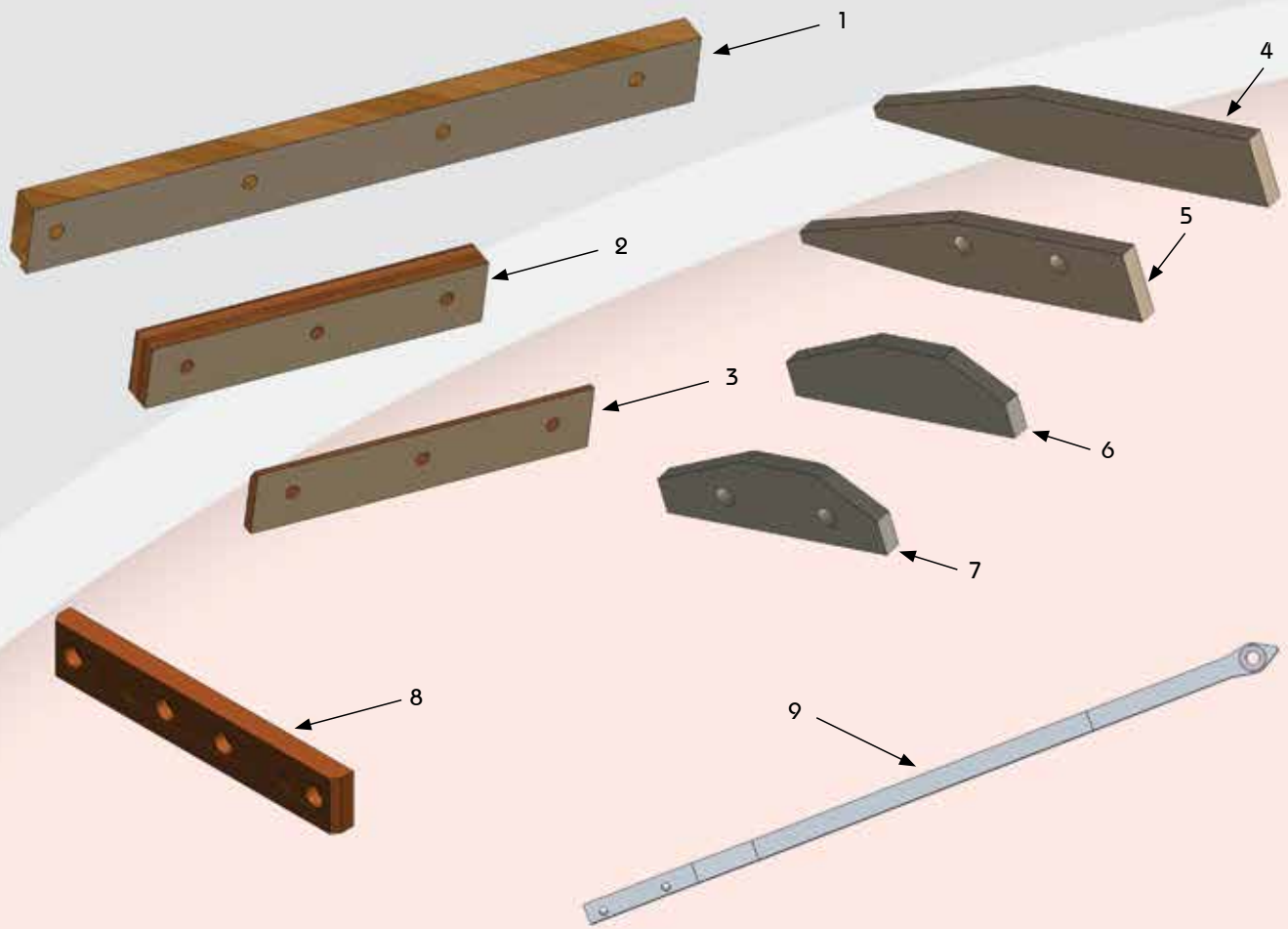


No	TK No	Art No	Designation
1	5022	72124A	RAPIER HEAD BODY FLAT LHS 9mm CERAMIC COATED
	5023	72347T	RAPIER HEAD BODY FLAT LHS 9 mm CHROME COATED
2	5043	72123Y	RAPIER HEAD LHS CPL. 9 mm FLAT Plain/Plain CERAMIC
	5051		RAPIER HEAD LHS CPL. 9 mm FLAT Plain/Serrated CERAMIC
	5053		RAPIER HEAD LHS CPL. 9 mm FLAT Plain/lengthways groove CERAMIC
	5045	72347R	RAPIER HEAD LHS CPL. 9 mm FLAT Plain/Plain CHROME
	5048		RAPIER HEAD LHS CPL. 9 mm FLAT Plain/Serrated CHROME
	5049		RAPIER HEAD LHS CPL. 9 mm FLAT Plain/lengthways groove CHROME
3	5000	70861H	CLAMPING SPRING LHS CPL.
4	5001	707873	CLAMPING BOLT LHS
5	5002	309758	HEADLESS SCREW
6	5003	345941	CLAMP
7	5004	345444	VULKOLLAN INSERT 6,0X1,5X10,0MM
8	5005	322842	CLAMPING SPRING 1,1X6,0X64,0MM
9	5007	322843	CLAMPING SPRING 1,1X6,0X50,0MM
10	5008	322844	CLAMPING SPRING 1,1X6,0X30,0MM
11	5009	72833V	PROTECTION PLATE 0,1X6,0X14MM
12	5010	345098	COUNTERSUNK SCREW
13	5011	70861E	LINE FEED LEVER
14	5012	328321	LOCKING ELEMENT
15	5013	338999	OVAL HEAD SCREW
16	5014	769850	STOP PIECE
17	5015	301702	WASHER
18	5016	322316	HEXAGON NUT
19	5017	71246V	CLAMPING LEVER LHS CPL SOLID PLAIN WITH
20	5019	71297P	CLAMPING LEVER LHS CPL SOLID SERRATED WITH
21	5025	450124	THREAD GUIDE PIN
22	5026	341167	TUNGSTEN CARBIDE SLEEVE
23	5027	345105	COUNTERSUNK SCREW
24	5028	343743	GUIDE PIECE 8,3X12,0X68,0MM SINTIMID BLACK
25	5064		BUSH 8/10/4,20 Tungsten Carbide for Rapier body LHS
26	5065		BUSH 10/12/3,2 Tungsten Carbide for Rapier body LHS
27	5029	345098	COUNTERSUNK SCREW
28	5030	71199G	CLAMP PIECE LHS CPL. VULKOLLAN-HM PLAIN
29	5031	70688C	TUNGSTEN CARBIDE INS.LHS CPL.VULKOLLAN-HM PLAIN
30	5032	342823	TUNSTEN CARBIDE INSERT LHS 5,0X0,7X16,0MM PLAIN
31	5033	342827	VULKOLLAN INSERT LHS 5,0X3,5X16,0MM
32	5034	71199H	CLAMP PIECE LHS CPL. VULKOLLAN-HM SERRATED
33	5035	70687Y	TUNSTEN CARBIDE INS.LHS CPL.VULKOLLAN-HM SERRATED
34	5036	342825	TUNSTEN CARBIDE INSERT LHS 5,0X0,8X16,0MM SERRATED
35	5037	72544R	CLAMP PIECE LHS CPL.VULKOLLAN - HM LENGTHWAYS GROOVED
36	5038	72544P	TUNGSTEN CARBIDE INS.LHSCPL VULKOLLAN HM LENGTHWAYS GROOVED
37	5039	348714	TUNGSTEN CARBIDE INS.LHS 5X0,80X16 MM LENGTHWAYS GROOVED
38	5066		CLAMP PIECE LHS CPL.VULKOLLAN - HM FINE SERRATED
39	5067		TUNGSTEN CARBIDE INS.LHSCPL VULKOLLAN HM FINE SERRATED
40	5068		TUNGSTEN CARBIDE INS.LHS 5X0,80X16 MM FINE SERRATED
41	5040	301701	WASHER
42	5041	311206	HEXAGON NUT
43	5226		CLAMP PIECE LHS

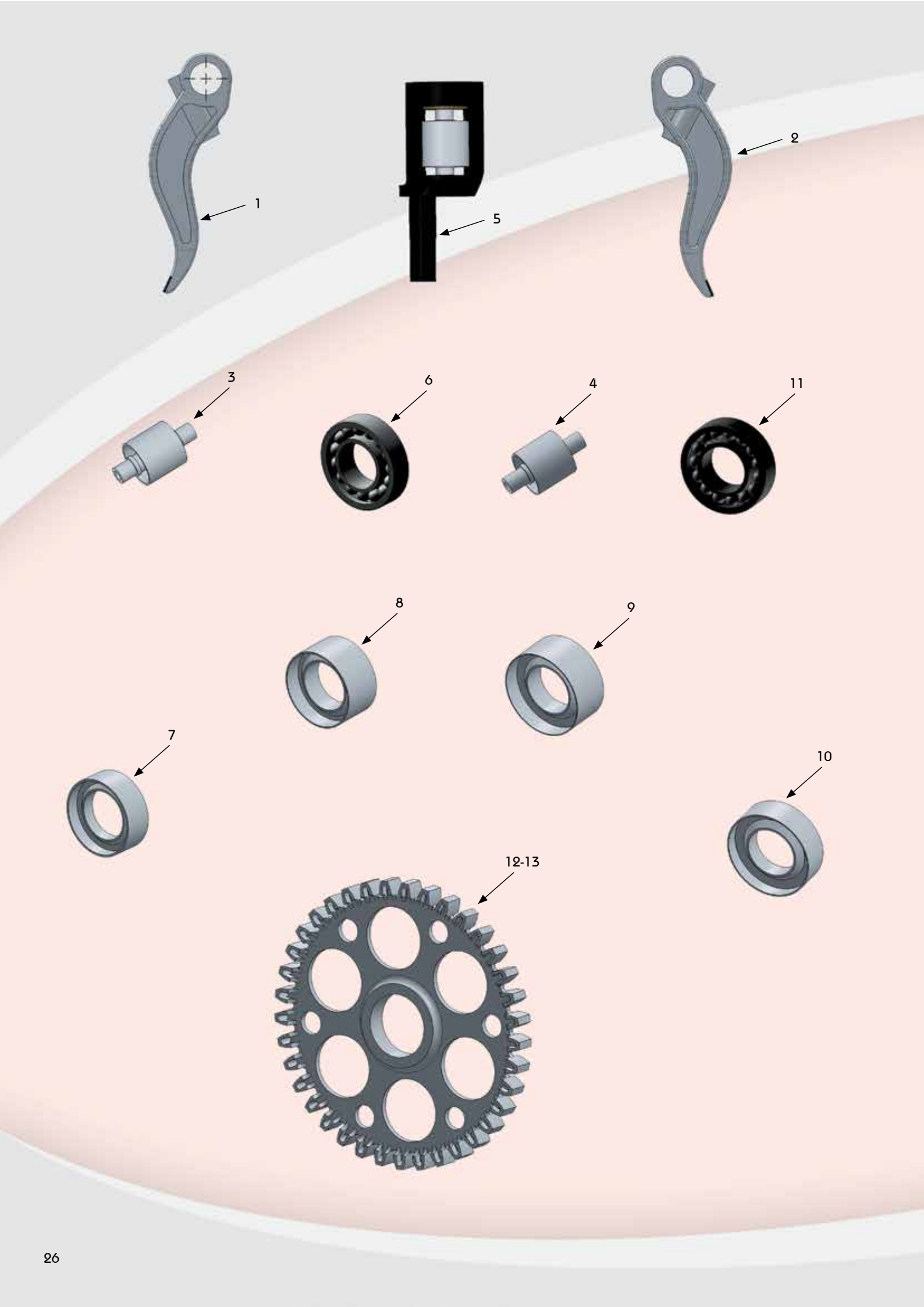
▶ RAPIER HEAD RHS 9 mm FLAT - PTV-PTS TYPE



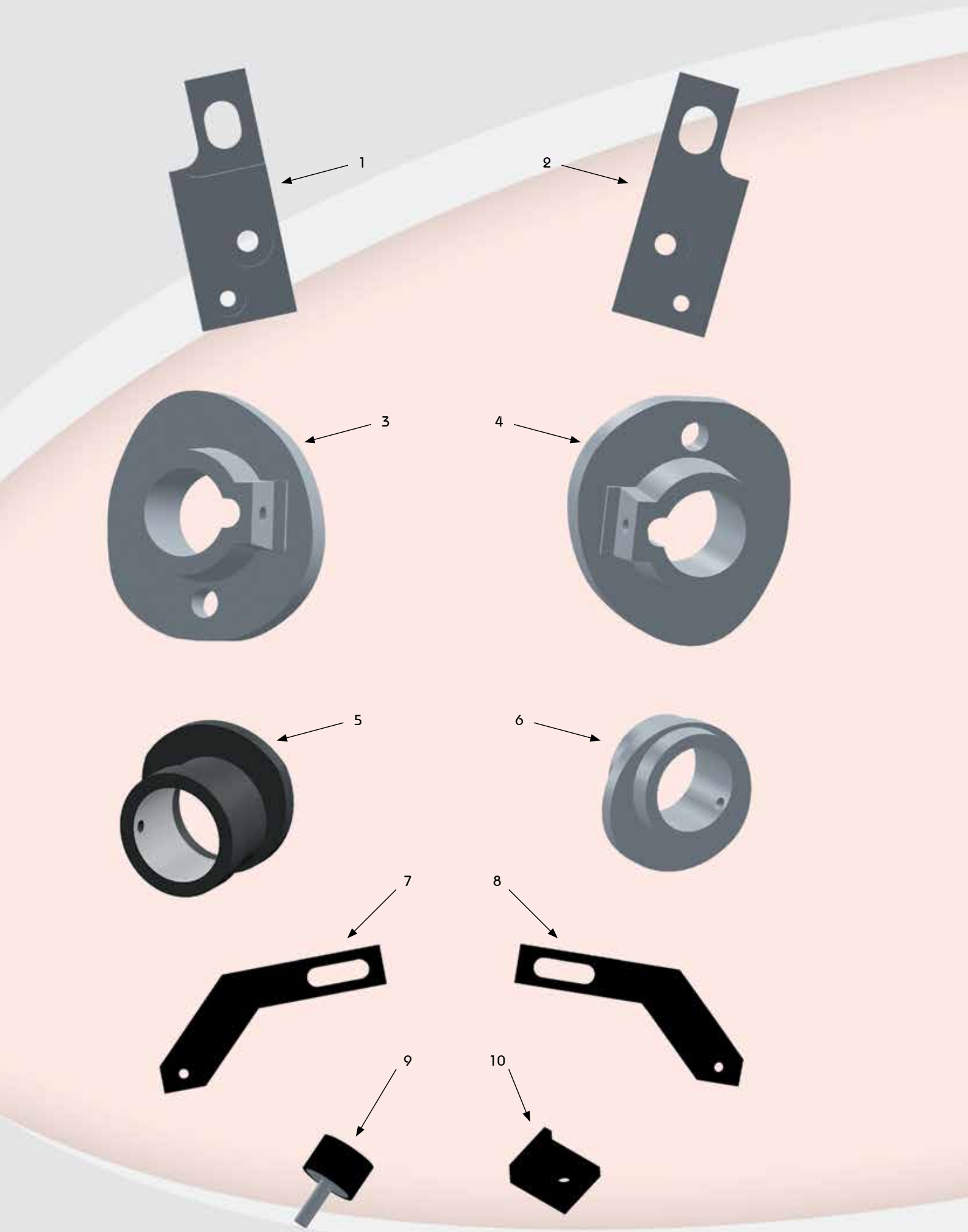
No	TK No	Art No	Designation
1	6009	72105X	RAPIER HEAD BODY FLAT RHS 9 mm CERAMIC COATED
	6010	72277W	RAPIER HEAD BODY FLAT RHS 9 mm CHROME COATED
2	6043	72105W	RAPIER HEAD RHS CPL. 9 mm FLAT Plain/Plain CERAMIC
	6051		RAPIER HEAD RHS CPL. 9 mm FLAT Plain/Serrated CERAMIC
	6053		RAPIER HEAD RHS CPL. 9 mm FLAT Plain/lengthways groove CERAMIC
	6045	72277X	RAPIER HEAD RHS CPL. 9 mm FLAT Plain/Plain CHROME
	6048		RAPIER HEAD RHS CPL. 9 mm FLAT Plain/Serrated CHROME
	6049		RAPIER HEAD RHS CPL. 9 mm FLAT Plain/lengthways groove CHROME
3	6000	70860K	CLAMPING SPRING RHS CPL.
4	6001	311184	HEXAGON SCREW
5	6002	309767	HEADLESS SCREW
6	6003	70744E	CLAMPING BOLT
7	5009	72833V	PROTECTION PLATE 0,1X6,0X14MM
8	5008	322844	CLAMPING SPRING 1,1X6,0X30,0MM
9	5007	322843	CLAMPING SPRING 1,1X6,0X50,0MM
10	5005	322842	CLAMPING SPRING 1,1X6,0X64,0MM
11	5004	345444	VULKOLLAN INSERT 6,0X1,5X10,0MM
12	6004	711576	PROTECTION PLATE 0,5X6,0X14MM
13	5028	343743	GUIDE PIECE 8,3X12,0X68,0MM SINTIMID BLACK
14	6005	311208	HEXAGON NUT
15	6006	310943	HEXAGON SCREW
16	6007	341914	TIGHTENING DISK
17	6012	311001	HEXAGON SCREW
18	5015	301702	WASHER
19	5012	328321	LOCKING ELEMENT
20	6014	334554	TUNGSTEN CARBIDE WASHER
21	6056		BUSH FOR CLAMP PIECE RHS TUNGSTEN 8/10/9
22	6015	71247B	CLAMPING LEVER RHS CPL.SOLID PLAIN
23	6016	71297W	CLAMPING LEVER RHS CPL.SOLID SERRATED
24	6017	333036	TUNGSTEN CARBIDE SLEEVE
25	6018	333318	SOCKET HEAD SCREW
26	6019	70985L	CLAMP PIECE RHS CPL.VULKOLLAN-HM PLAIN
27	6020	70879T	TUNGSTEN CARBIDE INSERT RHS CPL. VULKOLLAN-HM PLAIN
28	6021	343904	TUNGSTEN CARBIDE INSERT RHS 0,70X3,50X22 MM PLAIN
29	6022	343905	VULKOLLAN INSERT RHS 3,50X3,50X20 MM
30	6023	71203M	CLAMP PIECE RHS CPL.VULKOLLAN-HM SERRATED
31	6024	70940Y	TUNGSTEN CARBIDE INSERT RHS CPL VULKOLLAN-HM SERRATED
32	6025	344104	TUNGSTEN CARBIDE INSERT RHS 0,8X3,50X22 MM SERRATED
33	6026	72545P	CLAMPING PIECE RHS CPL. VULKOLLAN - HM LENGTHWAYS GROOVED
34	6027	72545N	TUNGSTEN CARBIDE INSERT RHS CPL.VULKOLLAN -HN LENGTHWAYS GROOVED
35	6028	348715	TUNGSTEN CARBIDE INSERT RHS 0,8X3,50X22 MM LENGTHWAYS GROOVED
36	6057		CLAMP PIECE RHS CPL.VULKOLLAN - HM FINE SERRATED
37	6208	787396	TUNGSTEN CARBIDE INSERT RHS CPL. VULKOLLAN-HM FINE SERRATED
38	6207	338237	TUNGSTEN CARBIDE INSERT RHS 0,8X3,50X22 MM FINE SERRATED
39	6209		CLAMP PIECE RHS



No	TK No	Art No	Designation
1	5054	344241	GUIDE PIECE LHS
2	6029	348713	GUIDE PIECE RHS THICK
3	6030	344250	GUIDE PIECE RHS THIN
4	5056	345723	CONTROL BAR LHS WITHOUT HOLE
5	5055	348903	CONTROL BAR LHS WITH HOLE
6	6032	338128	CONTROL BAR RHS WITHOUT HOLE
7	6031	348697	CONTROL BAR RHS WITH HOLE
8	5058	71893X	AIR GUIDE FILLET
9	5061	70344U	THREAD ROD CPL
10	7001		WEFT SCISSORS LONG STANDART
11	7002		TEMPLE SCISSORS LHS
12	7003		TEMPLE SCISSORS RHS
13	7017	861024	TUCKING ARM RHS
14	7018	861026	TUCKING ARM LHS
15	7020		TUCKING NEEDLE LHS
16	7021		TUCKING NEEDLE RHS



No	TK No	Art No	Designation
1	5057	728783	RELEASE LEVER L
2	6033	728784	RELEASE LEVER R
3	7008	777081	GUIDE ROLLER D :22 / L:42 MM
4	7009		GUIDE ROLLER D :22 / L:40 MM
5	7010	70031N	ROLLER SUPPORT RHS-LHS
6	7011	421388	GROOVED BALL BEARRING
7	7012	71894L	GUIDE ROLLER D:42x20 mm
8	7013		GUIDE ROLLER D:42x14 mm
9	7014		GUIDE ROLLER D:38x20 mm
10	7015	764486	GUIDE ROLLER D:38x14 mm
11	7016	334478	GROOVED BALL BEARRING
12	7022	788822	DRIVE GEAR STELL 37 TEETH 8mm
13	7023	792941	DRIVE GEAR STELL 37 TEETH 10mm



No	TK No	Art No	Designation
1	5060	72787E	SUPPORTING PLATE LHS
2	6034	72791T	SUPPORTING PLATE RHS
3	5600		CAM LHS
4	6600		CAM RHS
5	6601	72533C	LEVER CAM RHS
6	5601		LEVER CAM LHS
7	5602		TEMPLE LEVER LHS
8	6602		TEMPLE LEVER RHS
9	5604		SELECTOR VIBRATION STUD
10	5603		TEMPLE LEVER CLAMP RHS/LHS

► RE-CATING USED RAPIER HEADS / TEKRAR KAPLAMA



Before RE-COATING / Kaplama Öncesi



After RE-COATING / Kaplama Sonrası

Advantages

- Saving money no need to buy new one
- The same body can be re-coated minimum 3 times
- The same coating quality and smoothness

Avantajları

- Yeni kafa alıp yüksek bedel ödemeyin
- Aynı kafa en az 3 sefer tekrar kaplanabilir
- Ufak tefek kaplama kırık ve çatlaklarında kafaları atmamıza gerek kalmaz

► BRAZING USED CLAMP LEVERS / MANDAL ÖN VE ARKA ELMAS KAYNAĞI



Before BRAZING / Kaynak Öncesi



After BRAZING / Kaynak Sonrası

Advantages

- Saving money no need to buy new one
- The broken or worn out clamp levers can be used
- The same quality and new clamp sides

Avantajları

- Daha az maliyet, yeni mandal almanıza gerek kalmaz
- Elması düsmüs mandallarınızı tekrar degerlendirebilirsiniz
- Yenisi ile aynı kalitede ve pürüzsüz tutucu yüzeyleri olur

TÜMKALIP

TÜM KALIP APARAT SAN. ve TİC. LTD. ŞTİ.

Maltepe Mahallesi Karacabey Sokak No:7

Davutpaşa 34010 İstanbul - TÜRKİYE

T. +90 212 482 43 73 (pbx) F. +90 212 482 50 33

info@tumkalip.com.tr www.tumkalip.com.tr